

User Manual & Spare Parts Catalogue

(EN) 08-05-2024



Irrigator TL235



Fasterholt Maskinfabrik A/S
Ejstrupvej 22
7330 Brande
Denmark

Telephone:	+45 97 18 80 66
Telefax:	+45 97 18 80 40
E-mail:	mail@fasterholt.dk
Web:	www.fasterholt.dk

EU Declaration of Conformity	3
General safety	4
Safety instructions/warnings	4
Product labelling	5
Symbols used in this product	5
Operating instructions	6
Starting your irrigator	6
Nelson SR 150	7
Preparing the machine for irrigation	8
Preparing the machine after irrigation	8
Machines with a pressure relief valve	9
Maintenance	9
Preparation for winter	9
Faults on the irrigator	10
Technical data	11
Spare parts	12

EEC Declaration of conformity

Manufacture (name and address):**Fasterholt Maskinfabrik A/S**

Adresse: Ejstrupvej 22,
Fasterholt
Ort: 7330 Brande
Country: Denmark
Web: www.fasterholt.dk

CVR: 58 83 28 12
TEL: +45 97 18 80 66
FAX: +45 97 18 80 40
E-Mail: mail@fasterholt.dk

Hereby is certified that the following product:

Description, ID/mark, type: Irrigator TL 235

Serial No. if any: _____

Notified body if any: _____


EEC-type certificate if any: _____

Harmonised standards if any: EN 908:1999+A1:2009.
DS/EN/ISO 12100:2011.
DS/EN/ISO 14120:2015.

Is made according to the announcement no.693 of 10. Jun 2013 that implements the DIRECTIV 2006/42/EC.

Name, title and signature of manufacture:

Date


Signature

!!! Important!!!

Read this manual carefully before using your irrigator!

Your new Fasterholt Irrigator is a Danish built machine, but even the best machines only deliver top results when they are properly used and maintained.

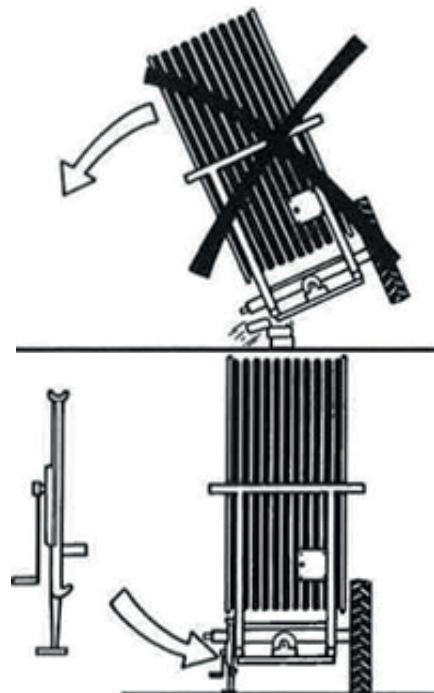
To ensure that the machine complies with the EU Machinery Directive, it is important to use the original machine parts. If non-original parts are used, compliance will not be maintained and you will be responsible for your own safety.

The irrigator is intended for irrigation with clean water from a drilled well or a watercourse.

Safety instructions/warnings

- It is forbidden to stand on the machine during irrigation, as this may result in fatal injury.
- Only one person (operator) should be in the vicinity of the machine during transport, setup and dismantling.
- When starting the machine on falling ground, you must be VERY careful not to disconnect the tractor from the machine until the irrigator has been put into gear, otherwise the machine may run away.
- All shields are fitted for your protection. Please leave them in place.
- Remember to tighten all wheel bolts.
- To perform an EMERGENCY STOP, pull the cable for the miswinding bar or pull the miswinding bar.
- V-belts may only be fitted after the machine has been unwound for the first time. (Only the first time the machine is used for irrigation).
- The gun must face out to the side when unwinding the machine.
- Stand aside when the gun is operating.
- Warning against contact with overhead power lines with the machine or water jet. Therefore avoid irrigation on or near power lines.
- During transport on uneven roads/fields, move VERY carefully according to the conditions.
- When parking the machine, use the wheel chocks mounted by the rear wheels.
- DANGER! Avoid welding in the paint layer! Before welding, remove all paint from the welding area – avoid inhalation of grinding dust.
- Max. transport speed with water in the hose is 15 km/h.
- Hoses, tyres and other parts of the irrigation machine must be disposed of at an approved recycling site.
- Gear oil can be harmful to health:
 - Skin contact may cause allergies
 - Inhalation of oil mist may cause lung disease
 - If a leak is found in the gearbox or rear axle assembly, stop it immediately and rectify the fault.
- Disposal of oil spills:
 - If oil spills are found, they should be cleaned up immediately with rags or oil absorbent powder.
 - Spilled products, as well as rags and powder used for oil spills, must be stored in sealed metal containers and delivered to the municipal collection site.
- If a rear wheel is removed, the machine must be jacked up and very stable, because it will fall completely on its side if it overturns. This may result in fatal injury.

WARNING!



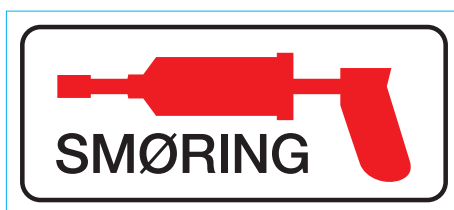
If the machine is to be moved via public roads, it must first be drained of water.

Symbols used in this product

The following symbols are used in this product and the following documentation.



WARNING Indicates a potentially dangerous situation which, if not prevented, could result in death or serious injury.



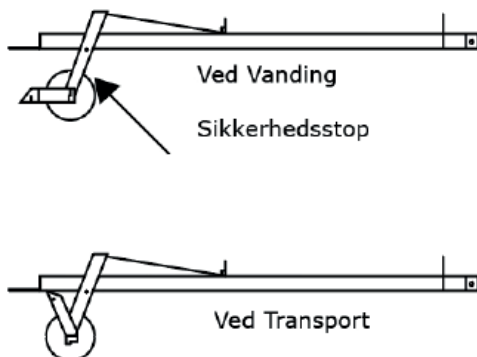
LUBRICATION Indicates lubrication is required as per the service description



SERVICE WARNING Indicates a service hazard

Starting your irrigator

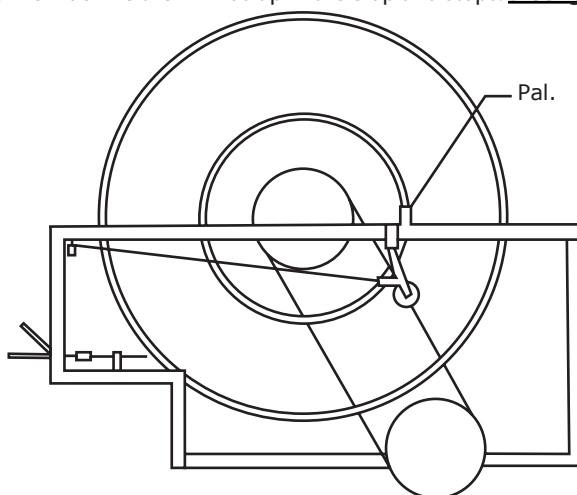
Move the machine to the field in the transport position. When the machine is at the crop to be irrigated, disconnect the tractor and position the front drawbar vertically.



REMEMBER!

When starting the machine on falling ground, you must be VERY careful not to disconnect the tractor from the machine until the irrigator has been put into gear, otherwise it may run away.

Connect the tractor to the rear drawbar. The machine then winds up in the crop and stops. **Disengage the pawl**



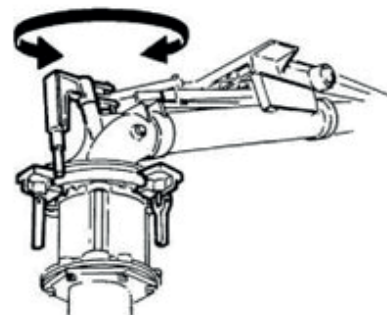
Tap the ground spikes into the fixed stop bar. Lower the drawbar over the hose, and release the safety stop so the hose reel runs on the hose. Unwind the machine with the brake applied sufficiently to keep the hose tight on the drum at ALL times.

Nelson SR 150 is factory-adjusted to Danish conditions and ready to use after the following three steps:

1. Select and install the nozzle size that best suits your application. Performance data for the different sizes are shown in the table below.
2. Adjust the stop on the part circle to obtain the desired irrigation angle.
3. There is a grease fitting which should be checked once a week for refilling.

ADJUSTMENT

The only thing you can adjust is the counterweight on the drive arm. By moving the counterweight forward, the gun will slowly irrigate from side to side. If you move the counterweight back, the gun will irrigate quickly. If it does not irrigate quickly enough, you can remove the brake springs (no. 778474) in pairs (contact the service department).



WARNING: DO NOT ADJUST WHEN THE GUN IS IRRIGATING!!

DANGER.....: HIGH WATER PRESSURE – STAY CLEAR!!

TABLE FOR NELSON SR 150

Dysetabel for Nelson SR150 kanon, 21°- Plastdyser.

Tryk (Bar)	18mm		19mm		20mm		21mm		22mm		23mm		24mm	
	m ³ /h	Rad.(m)	m ³ /h	Rad.(m)	m ³ /h	Rad.(m)	m ³ /h	Rad.(m)	m ³ /h	Rad.(m)	m ³ /h	Rad.(m)	m ³ /h	Rad.(m)
3,5	20,2	32,5	22,7	33,5	25,4	34,5	28,0	36,0	30,9	36,5	34,1	37,5	37,5	38,8
4,0	21,6	33,5	24,3	34,5	27,1	35,7	29,9	36,5	33,0	37,8	36,4	38,8	40,1	40,0
4,5	22,9	34,5	25,7	35,7	28,7	36,5	31,7	37,8	35,0	39,2	38,6	40,5	42,5	41,4
5,0	24,2	35,2	27,1	36,5	30,3	37,8	33,4	39,2	36,9	40,5	40,7	41,4	44,8	42,7
5,5	25,3	36,5	28,5	37,8	31,7	38,7	35,1	40,0	38,7	41,4	42,6	42,7	47,0	44,0
6,0	26,5	37,4	29,8	38,7	33,1	40,0	36,6	41,4	40,4	42,7	44,5	44,0	49,0	45,3

Tryk (Bar)	25mm		26mm		27mm		28mm		29mm		30mm		31mm	
	m ³ /h	Rad.(m)	m ³ /h	Rad.(m)	m ³ /h	Rad.(m)	m ³ /h	Rad.(m)	m ³ /h	Rad.(m)	m ³ /h	Rad.(m)	m ³ /h	Rad.(m)
3,5	41,0	39,6	44,8	40,5	49,0	41,8	53,3	42,7	57,9	44,0	62,8	44,8	67,8	45,8
4,0	43,8	40,9	47,8	42,2	52,3	43,1	57,0	44,5	61,9	45,8	67,1	46,6	72,5	47,5
4,5	46,5	42,7	50,7	43,6	55,5	44,5	60,5	45,8	65,7	47,0	71,2	48,0	76,9	49,3
5,0	49,0	44,0	53,5	44,5	58,5	46,2	63,8	47,5	69,2	48,4	75,1	49,7	81,1	50,6
5,5	51,4	44,5	56,1	46,2	61,4	47,5	66,9	48,8	72,6	50,2	78,7	51,0	85,0	52,4
6,0	53,7	46,2	58,6	47,5	64,1	48,8	69,9	49,7	75,8	51,0	82,2	52,4	88,8	53,7

Tryk (Bar)	32mm		33mm		34mm	
	m ³ /h	Rad.(m)	m ³ /h	Rad.(m)	m ³ /h	Rad.(m)
3,5	73,1	46,6	78,7	47,5	84,5	48,4
4,0	78,1	48,4	84,2	49,3	90,3	50,2
4,5	82,9	50,2	89,3	51,0	95,8	51,9
5,0	87,4	51,9	94,1	52,8	101,0	53,2
5,5	91,6	53,2	97,8	54,1	105,9	55,0
6,0	95,7	54,6	103,0	55,4	110,6	56,3

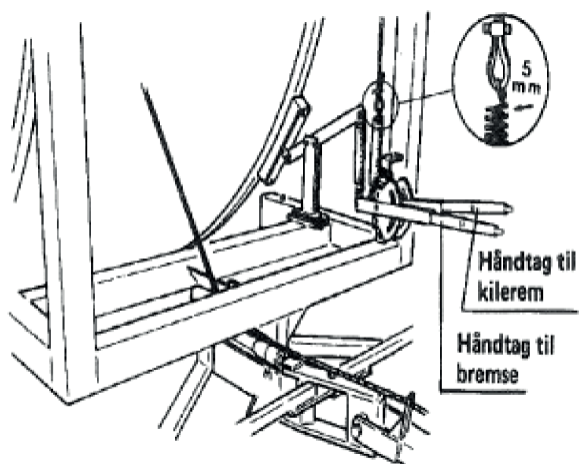


NELSON

Preparing the machine for irrigation

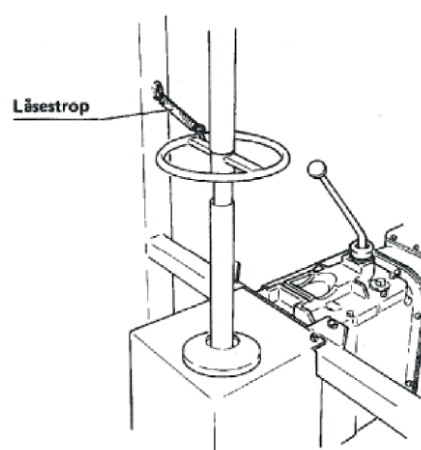
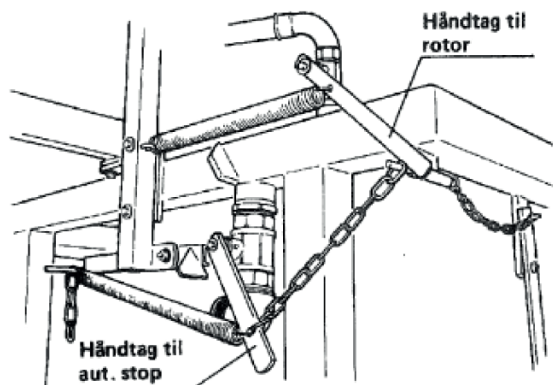
Engage the pawl.

Tighten the V-belt so there is at least 5 mm air in the spring. Release the brake lever completely.



Open the rotor valve (lock with the locking pin).

Close the automatic stop valve. (Engage the chain on the locking pin).



Put the machine in gear. (Remember to select the right gear for the speed you want to drive at.) Remove the rotor locking strap. Attach the charge hose to the hydrant. Then open the hydrant, start the pump and irrigation can begin. Place the chock on the hose where you want to stop irrigation.

Table of forward speeds for TL 235S at a water pressure of 4 bar.

1. Gear	6 metres per hour
2. Gear	9 metres per hour
3. Gear	15 metres per hour
4. Gear	22 metres per hour
5. Gear	33 metres per hour
6. Gear	50 metres per hour

Preparing the machine after irrigation

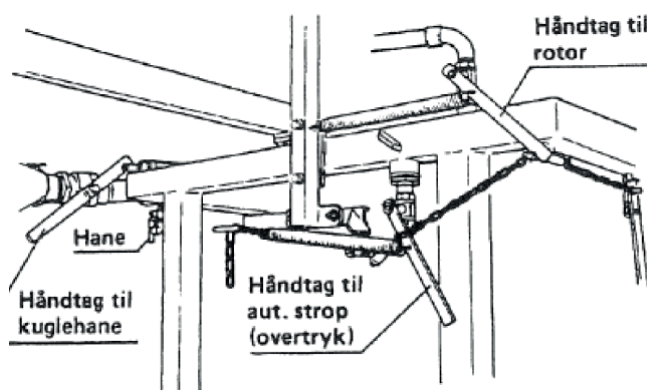
After irrigation, tighten the brake and loosen the V-belt. Then put the machine into neutral. (The best way to do this is to turn the rotor backwards until there is no longer voltage in the gearbox).

ALWAYS REMEMBER to put the small gear lever into neutral first. Lock the rotor with a locking strap so it is parallel with the length of the machine.

ALWAYS REMEMBER THAT THE GEARBOX MUST BE IN NEUTRAL WHEN THE MACHINE IS NOT MOVING BY ITSELF.

Machines with a pressure relief valve

Open the lever on the large ball valve so the cylinder is fully compressed. (The best way to do this is to open a small valve on the pipe. Remember to close it after use.)



Maintenance

Remember to tighten the wheel bolts regularly.

Check the guide pins in the hose guide regularly.

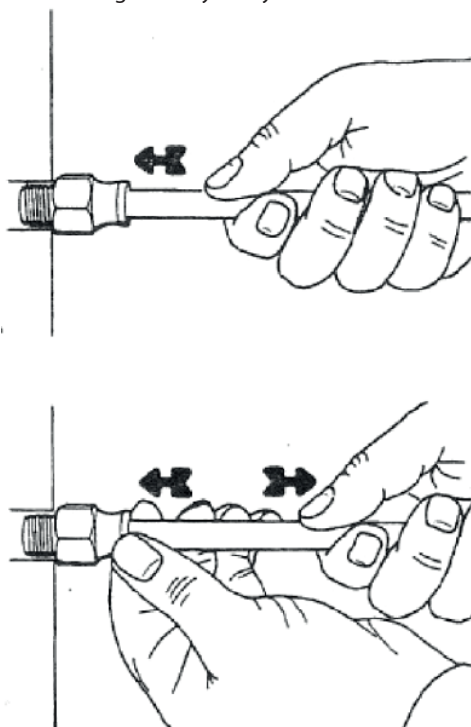
Preparation for winter

Drain water from the machine:

Unwind the hose completely, release the brake and tighten the V-belt, but do NOT put the machine in gear. Then drive the machine into the tractor. Open the rotor valve to prevent frost damage.

Lubrication:

Front wheel hubs, front spindles, hose guides, bearings on hose guides, rotor shafts and drums. Check for water in the oil in the rear axle assembly. Oil in the rear axle assembly should be changed every two years.



Machines with a pressure relief valve:

Remove the cylinder hoses so the water can exit the cylinder and main frame. Draw the cylinder in and out 2 times to drain it completely.

Faults on the irrigator

Check the following before calling a technician:

1. Rotor is not turning

- a. Check that the water pressure is at least 4 kg (4 bar)
- b. Check that the automatic stop valve is closed
- c. Check that the pressostat on the pump is adjusted correctly
- d. Check that the rotor valve is open
- e. Check that the rotor nozzles are clean

2. Rotor is turning, but machine is not moving

- a. Check that both the long and short gear levers are in gear
- b. Check that the pressure relief valve is open so the cylinder compresses

3. Rotor is not turning, but machine has irrigated

- a. Check that the brake is released
- b. Check that the hose is wound up tightly. If it is loose, tighten it. This is done by manually rotating the drum. Remember that the pawl must be locked securely.
- c. Check that the V-belts are tight. There must be an opening of at least 5 mm in the springs

4. If the machine does not wind up the hose properly, it may be that:

- a. The hose guide needs to be adjusted. To adjust the guide, remove the chain from the hose guide to the cross track shaft. Then turn the cross track shaft until the hose guide fits the hose again. Then fit the chain.
- b. The guide pin is worn and needs to be replaced.
- c. The V-belt is too slack or excessively worn. To tighten the belt, move the hole plate at the end of the cable. If it cannot be moved any further, the cable needs to be shortened.

Hose PEL 100mm:

Capacity up to 55m³, hose length from 200 to 500m.

Hose PEL 110mm:

Capacity up to 75m³, hose length from 200 to 350m.

Speed at 4 bar pressure and above:

6–50 metres per hour.

Weight without water with 500 m / 100 mm hose:

3116 kg.

Weight with water with 500 m / 100 mm hose:

5759 kg

Gun:

Nelson SR150

Front wheels (air pressure: 35psi):

900" x 16" x 6 ply 3 rib

Rear wheels (air pressure: 35psi):

10" x 28" x 8 ply

Oil in rear axle assembly:

33 litres Statoil Hydaway HM 100

Grease for lubrication:

Statoil Moly Way EP2 or equivalent

Track width:

165 cm Standard (Options: 152cm, 172cm, 182cm, 192cm)

Length:

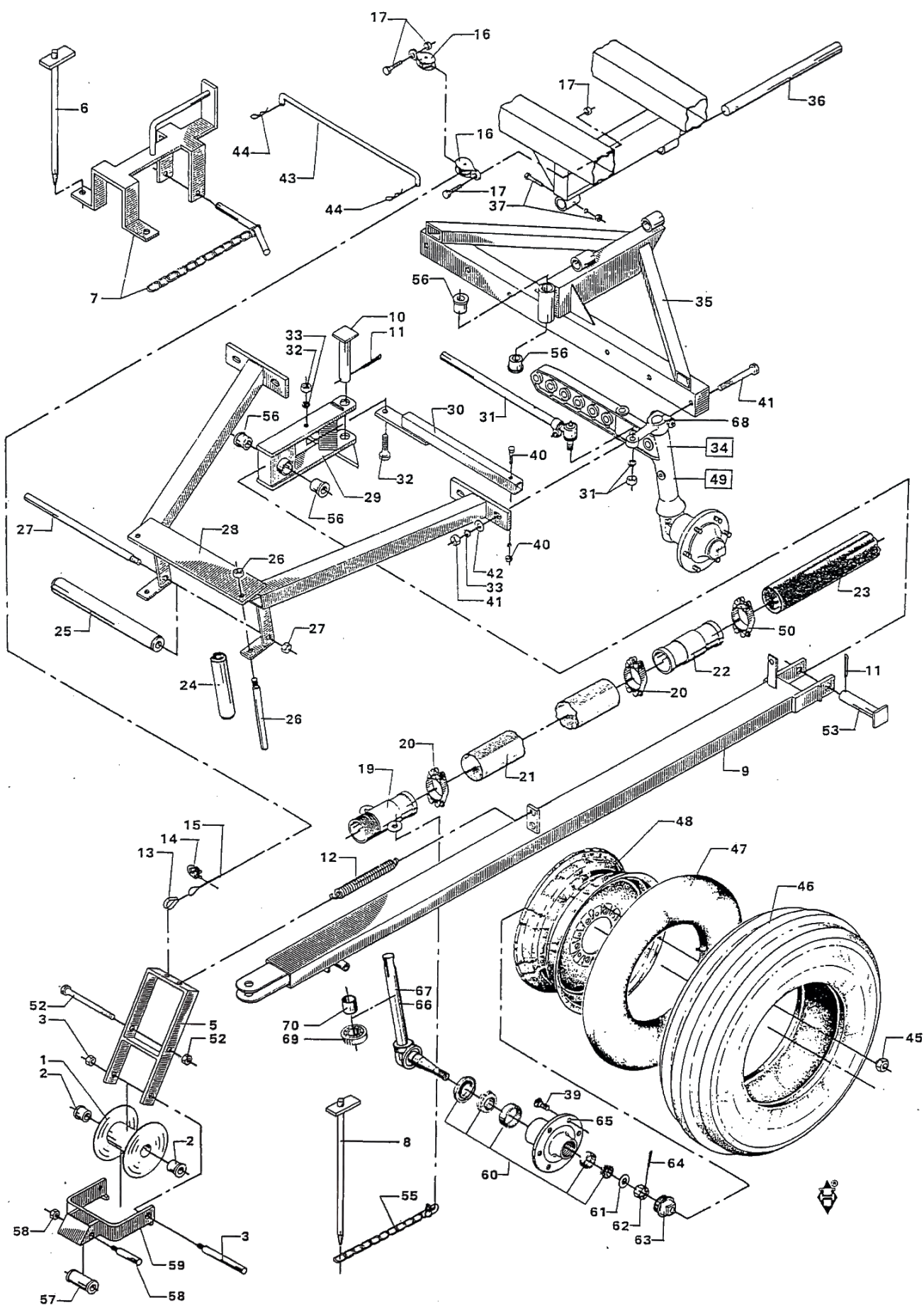
5500 mm

Width:

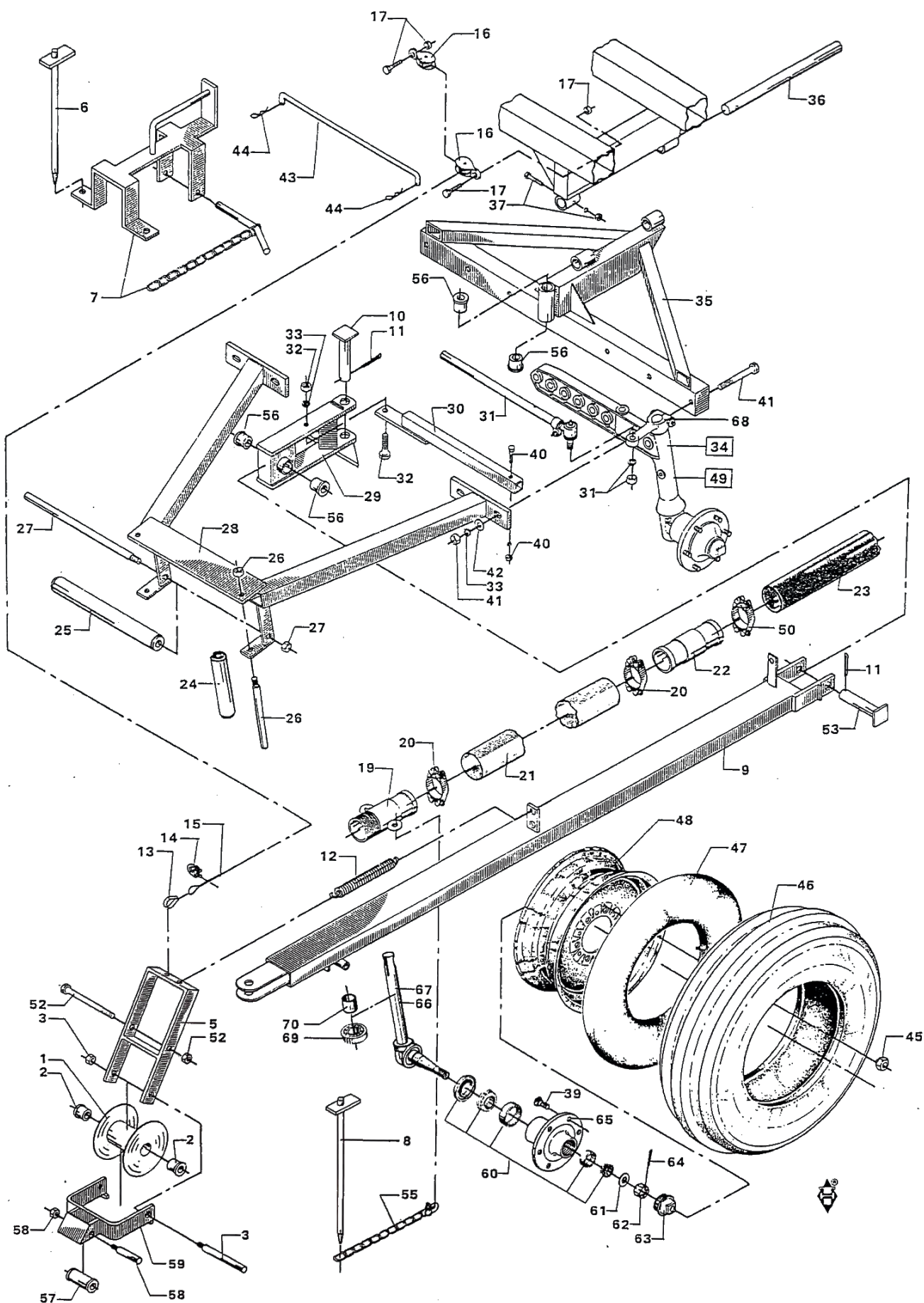
2150 mm

Height:

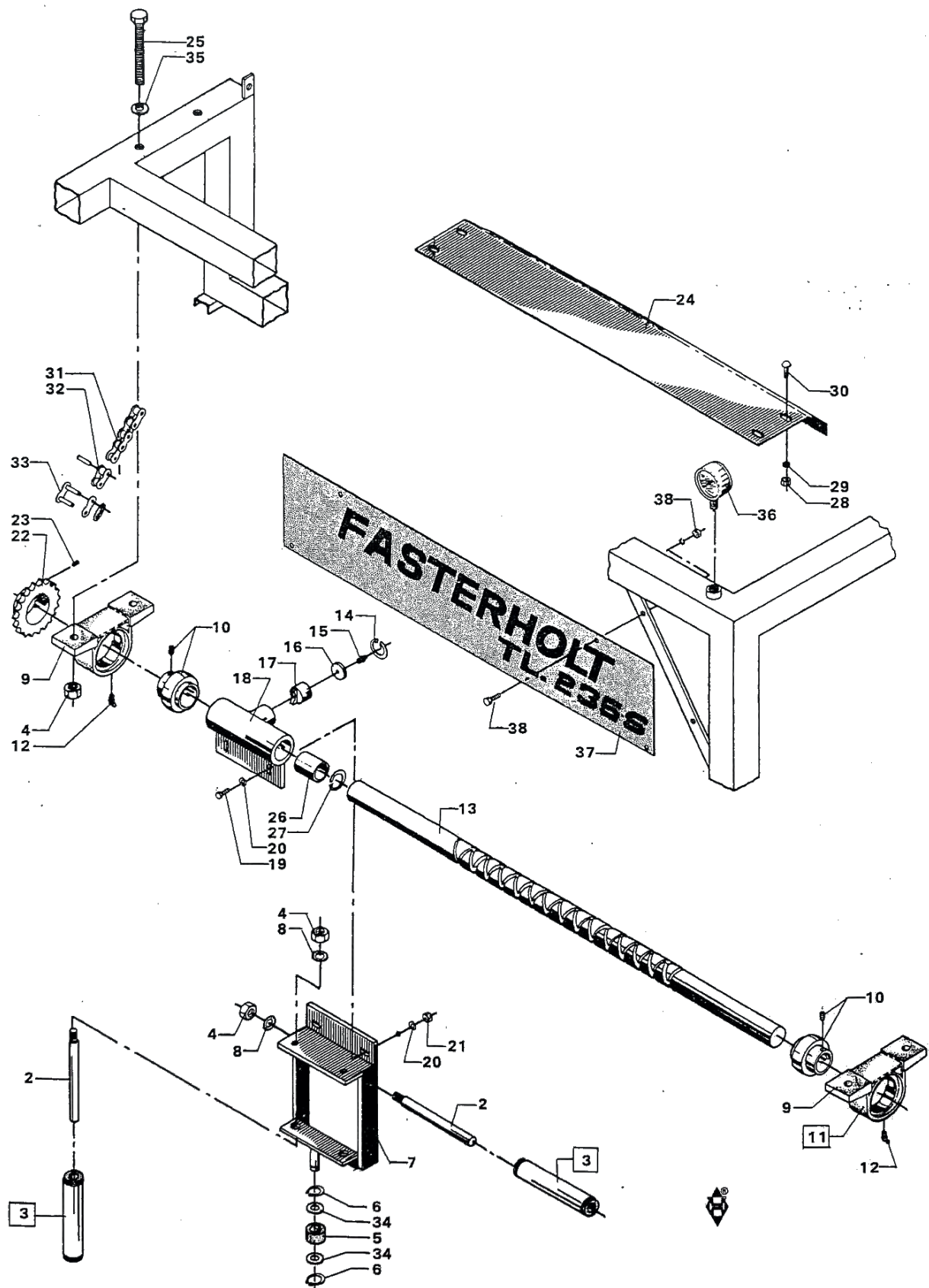
3650 mm



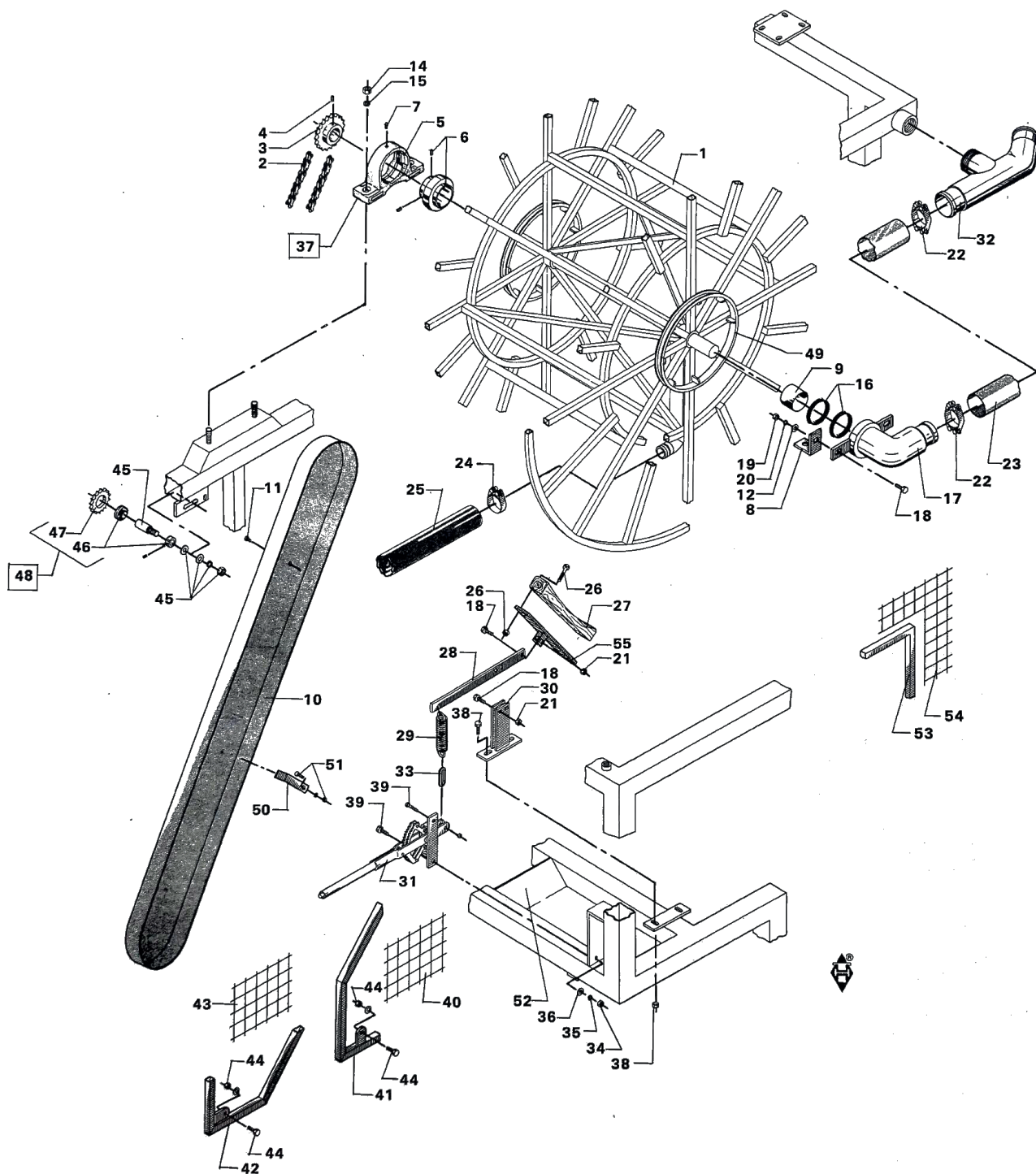
Pos. nr. Pos. No Pos. Nr.	Best. nr. Part No Teil Nr.	Benævnelse	Description	Bezeichnung	Bemærkninger Remark Bemerkungen
1	1761000	Slangehjul	Hose Reel	Schlauchrolle	ø 110 Slange
1	761000	Slangehjul	Hose Reel	Schlauchrolle	ø 100 Slange
2	761001	Nylonleje	Coller Linings	Nylonbuchse	ø 21 mm.
3	1761269	Aksel	Axle	Achsel	Ø20 x 235 mm.
3	761269	Aksel	Axle	Achsel	Ø20 x 215 mm.
5	1761004	Bøjle	Clamp	Bügel	ø 110 Slange
5	761004	Bøjle	Clamp	Bügel	ø 100 Slange
6	761255	Jordspyd	Earth Rod	Erdbefestigung	
7	1761006	Stopklods	Stop Block	Anschlag	ø 100 Slange
8	1001255	Jordspyd	Earth Rod	Erdbefestigung	
9	761008	Trækstang	Drawbar	Zugstange	
10	761330	Splitbolt	Cotter Bolt	Splintbolzen	ø 22 x 165 mm.
11	761010	Split	Split	Splint	ø5 x 30 mm.
12	761011	Fjeder	Spring	Feder	ø3,5 x 330 mm.
13	761012	Kouse	Thimbles	Fingerhut	1/4" galv.
14	761013	Wirelås	Wire Locks	Dratsperren	1/4" galv
15	1761014	Wire	Steel Wire	Stahldraht	1/4" x 6450 mm.
16	761015	Wirerulle	Wire Roller	Drahtrolle	
17		Bolt	Bolt	Schraube	M10 x 25 mm.
19	1001018	Rør	Tube	Rohrstück	3"
20	1001019	Spændebånd	Hose Clip	Schlauchspange	2A - 100 mm.
21	1001020	Slange	Hose	Schlauch	90 mm. x 1250 mm.
22	1001021	Rør	Tube	Rohrstück	ø 100 slange
22	1761021	Rør	Tube	Rohrstück	ø 110 slange
23		Slange	Hose	Schlauch	ø 100 slange
24	761023	Bærerulle	Supporting Roller	Trägerrolle	5/4" x 185 mm.
25	1761024	Bærerulle	Supporting Roller	Trägerrolle	ø 110 sl. 5/4" x 500 mm.
25	761024	Bærerulle	Supporting Roller	Trägerrolle	ø 100 sl. 5/4" x 400 mm.
26	761025	Aksel	Axle	Achsel	ø 20 x 240 mm.
27	1761026	Aksel	Axle	Achsel	ø 110 sl. ø 20 x 550 mm.
27	761026	Aksel	Axle	Achsel	ø 100 sl. ø 20 x 450 mm.
28	1761027	Slangestyr	Hose Guide	Schlauchführung	ø 110 slange
28	761027	Slangestyr	Hose Guide	Schlauchführung	ø 100 slange
29	761296	Beslag	Fittings	Beschlag	
30	761029	Styrearm	Track Rod	Spurstange	
31	761030	Styrekugle	Ball Joint	Kugelgelenk	
32		Bolt	Bolt	Schraube	M16 x 50 mm.
33		Fjederskive	Spring Collar	Federscheibe	ø16,0 mm
34	761033	Nav. Komplet	Hub. Complet	Nabe. Komplet	Venstre/Left/Links
35	2351035	Forbro	Axle Centre	Mittelachsenbrücke	For 152 - 162 Cm.
35	2351165	Forbro	Axle Centre	Mittelachsenbrücke	For 172 - 182 - 192 Cm.
36	761036	Aksel	Axel	Achse	ø 25 x 430 mm.
37		Bolt	Bolt	Schraube	M8 x 50 mm.
39	311120	Navbolt	Hub Bolt	Nabenbolzen	1/2" UNF.
40		Bolt	Bolt	Schraube	M6 x 40 mm.
41		Bolt	Bolt	Schraube	M16 x 120 mm.
42		Spændskive	Tension Disk	Bellagsscheibe	Ø16,0 mm. Svær
43	761043	Holder	Holder	Halter	
44	761044	R-split	R-split	R-splint	ø3,5 mm.
45	761045	Møtrik	Nut	Mutter	1/2" UNF
46	2351046	Dæk	Tyre	Reifen	900x16" x 6 lag
47	2351047	Slange	Tube	Schlauch	800 x 16"



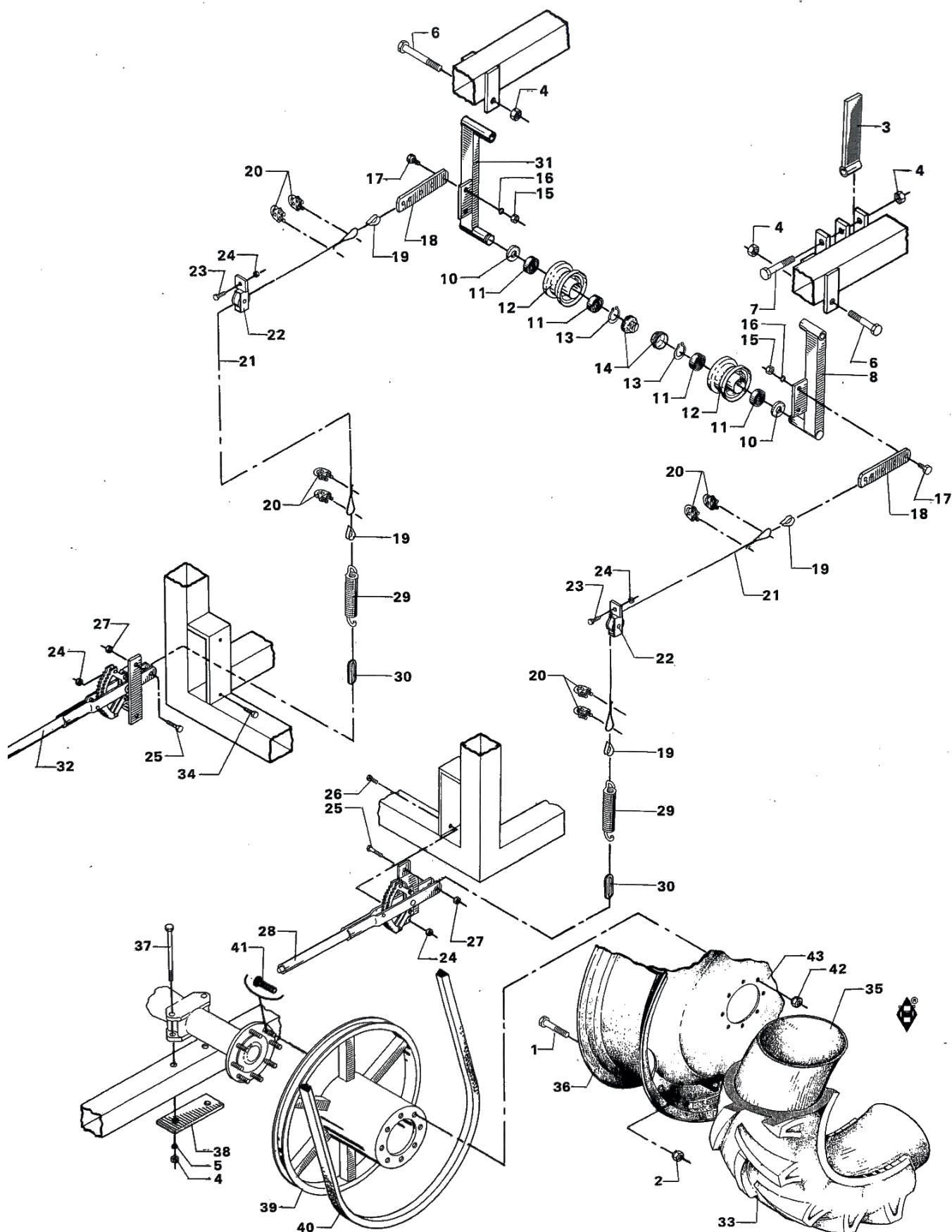
Pos. nr.	Best. nr.				Bemærkninger
Pos. No	Part No	Benævnelse	Description	Bezeichnung	Remark
Pos. Nr.	Teil Nr.				Bemerkungen
47	2351047	Slange	Tube	Schlauch	900 x 16"
48	2351048	Fælg	Rim	Felge	800 x 16"
49	761034	Nav. Komplet	Hub. Complete	Nabe. Komplet	Højre/Right/Rechts
50	1001019	Spændebånd	Hose Clip	Schlauchspange	
52		Bolt	Bolt	Schraube	M16x200 mm. Ø110mm
52		Bolt	Bolt	Schraube	M16x180 mm. Ø100mm
53	761268	Splitbolt	Cotter Bolt	Splintbolzen	ø 22 x 135 mm.
55	761256	Kæde	Chain	Kette	Ø6,0 x 700 mm.
56	761271	Nylonleje	Coller Linings	Nylonbuchse	ø 22 mm.
57	761272	Bærerulle	Supporting Roller	Trägerrolle	5/4" x 60 mm.
58	761273	Aksel	Axle	Achsel	ø20 x 115 mm.
59	1761305	Sikkerhedsstop	Safety Stop	Sicherheitanschlag	ø 110 mm.
59	761305	Sikkerhedsstop	Safety Stop	Sicherheitanschlag	ø 100 mm.
60	310020	Lejesæt	Bearing. Complet	Lager. komplett	
61	311126	Skive	Tension Disk	Beilagsscheibe	
62	311165	Møtrik	Nut	Mutter	
63	311121	Navkapsel	Hub Cap	Nabenkappe	
64	311166	Split	Split	Splint	
65	317188	Nav	Hub	Nabe	
66	318644	Spindel	Spindle	Spindel	Højre/Right/Rechts
67	318645	Spindel	Spindle	Spindel	Venstre/Left/Links
68	354090	Spindelarm Højre	Arm Spindle, Right	Spurstangenhebel, Rechts	Svær model
68	354091	Spindelarm Venstre	Arm Spindle, Left	Spurstangenhebel, Links	Svær model
69	311110	Trykleje	Beaing Spindle	Drucklager	
70	311128	Bøsning	Bushing	Buchse	



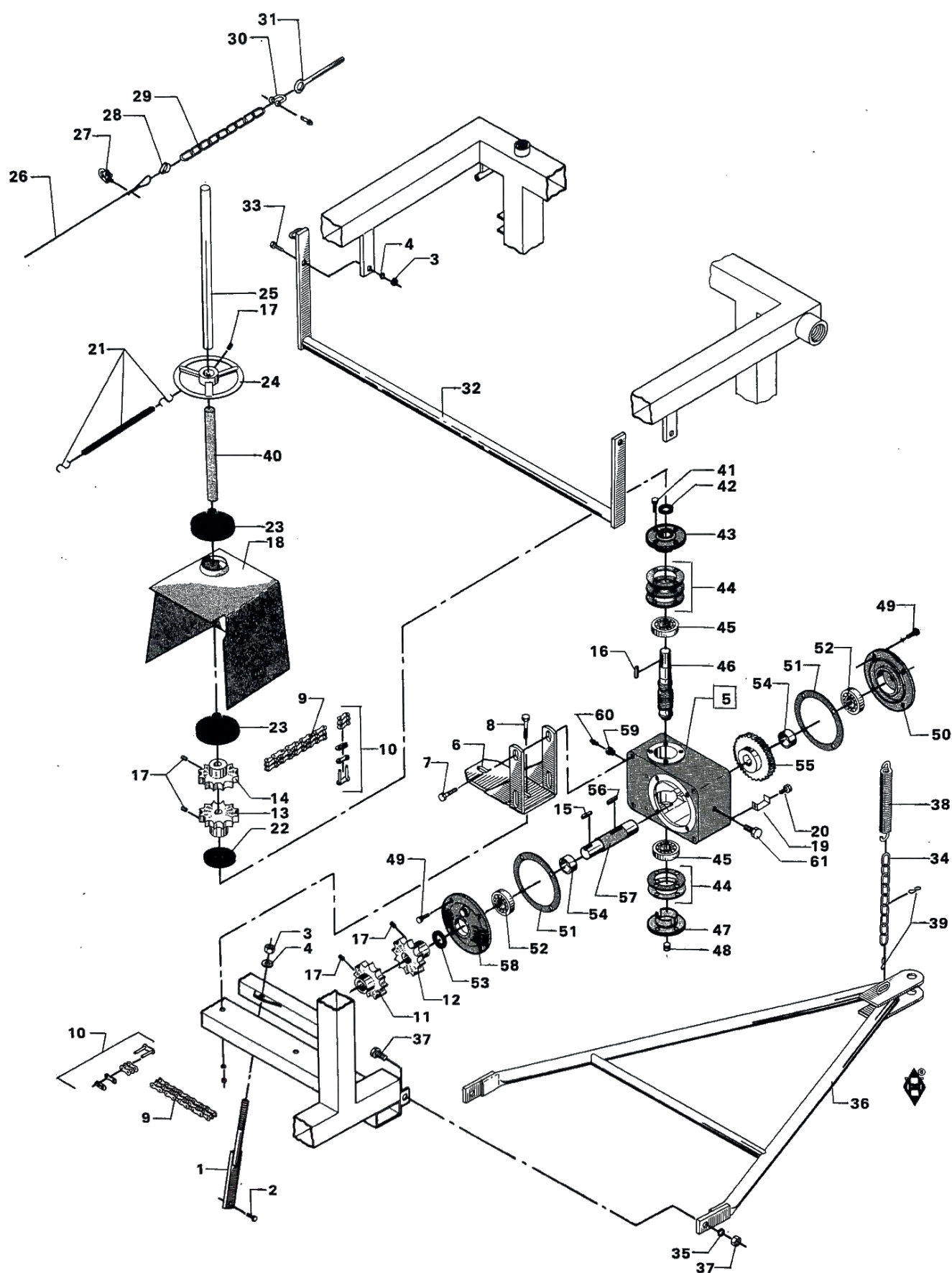
Pos. nr. Pos. No. Pos. Nr.	Best. nr. Part No. Teil Nr.	Benævnelse	Description	Bezeichnung	Bemærkninger Remarks Bemerkungen
2	761025	Aksel	Axle	Achsel	20 x 240 mm
3	761023	Bærerulle	Supporting Roller	Trägerrolle	5/4" x 185 mm
4	761003	Møtrik	Nut	Mutter	16 mm
5	761063	Nylonleje	Coller Linings	Nylonbuchse	
6	761065	Låsering	Snap Ring	Seegerring	20 mm
7	761322	Slangestyr	Hose Guide	Schlauchführung	
8	761032	Fjederskive	Spring Collar	Federscheibe	16 mm
9	761287	Lejehus	Bearing Cap	Lagerdeckel	P 210
10	761288	Leje	Bearing	Lager	UC 210
11	761289	Leje, komplet	Ball Bearing, complete	Kugellager, komplett	UCP 210
12	761247	Smørenippel	Grease Nipple	Schmiernippel	1/8" - 45°
13	2351323	Aksel	Axle	Achsel	50 x 1440 mm
14	761285	Låsering	Snap Ring	Seegerring	ø40 indv.
15	761286	Smørenippel	Grease Nipple	Schmiernippel	6 mm
16	761284	Skive	Tension Disk	Spannscheibe	
17	761283	Føringsaksel	Axle	Achsel	
18	761282	Føringsmuffe	Guide Sleeve	Führungsmuffe	
19	761115	Maskinbolt	Engine Bolt	Maschinenbolzen	12 x 35 mm
20	761100	Skive	Tension Disk	Spannscheibe	12 mm
21	761061	Møtrik	Nut	Mutter	12 mm
22	1761290	Kædehjul	Sprocket Wheel	Treibkeil	3/4" x 16 tdr. - ø110
22	761290	Kædehjul	Sprocket Wheel	Treibkeil	3/4" x 17 tdr. - ø100
23	761070	Pinolskrue	Allen Screw	Innensechskantschraube	10 x 12 mm
24	2351078	Skærm	Shield	Schirm	
25	761254	Maskinbolt	Engine Bolzen	Maschinenbolzen	16 x 130 mm
26	761293	Nylonleje	Coller Linings	Nylonbuchse	
27	761329	Låsering	Snap Ring	Seegerring	
28	761017	Møtrik	Nut	Mutter	M10
29	761248	Spændeskive	Tension Disk	Spannscheibe	10 mm
30	761079	Bræddebolt	Carriage Bolt	Schwellenschraube	10 x 20 mm
31	1761325	Kæde	Roller Chain	Rollenkette	3/4" x 203 ruller
32	761058	Samleled, forkræbber	Assembly Link	Sammelglied	3/4"
33	761056	Kædesamler	Assembly Link	Sammelglied Gerade	3/4"
34	761328	Skive	Disk	Scheibe	
35	761042	Skive	Disk	Scheibe	16 mm
36	761163	Manometer	Manometer	Manometer	
37	2351319	Navneplade	Lettering	Firmenzeichen	
38	761090	Maskinbolt	Engine Bolt	Maschinenbolzen	6 x 20 mm



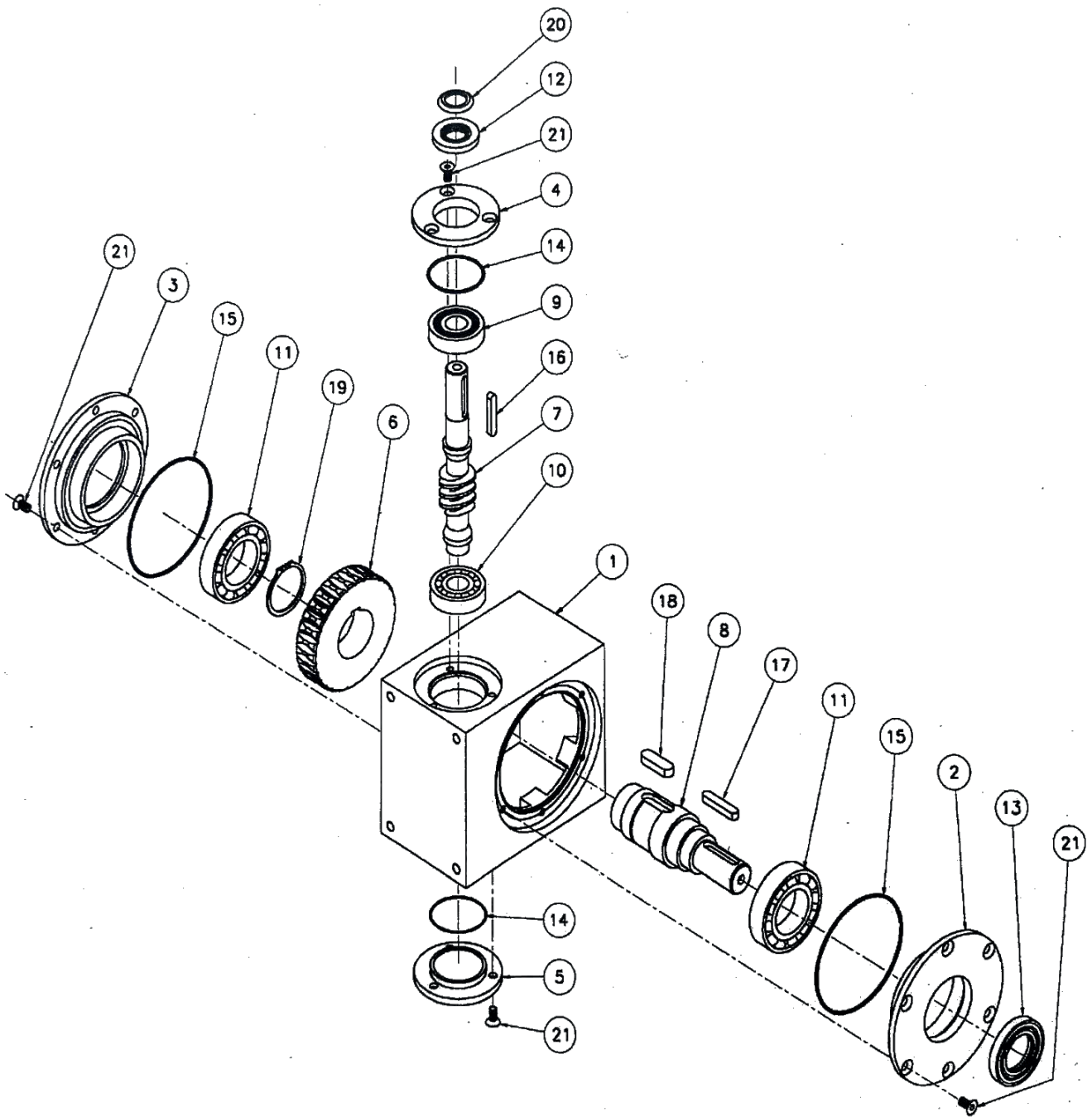
Pos. nr. Pos. No Pos. Nr.	Best. nr. Part No Teil Nr.	Benævnelse	Description	Bezeichnung	Bemærkninger Remark Bemerkungen
1	2351081	Pariserhjul	Reel	Schauchtrommel	Opgiv slangetype
2	1761325	Kæde	Roller Chain	Rollenkette	3/4" 203 ruller
3	1001291	Kædehjul	Sprocket Wheel	Kettenrad	3/4" x 33 T.
4		Pinolskrue	Allen Screw	Innensechskantschraube	M10 x 12
5	1001084	Lejehus	Bearing Housnig	Lagerhaus	P 218
6	1001085	Kugleleje	Bearing	Lager	UC 218
7		Smørenippel	Grease Nipple	Schmiernippel	1/8" R
8	1001087	Beslag	Fittings	Beschlag	
9	1001270	Rustfri Rør bøsning	Tube	Rohrstück	Ø90 mm.
10	2351089	Skærm	Schield	Schirm	
11		Bolt	Bolt	Schraube	M8 x 16 mm.
12		Fladskive	Tension Disk	Spannscheibe	Ø 12 mm.
14		Møtrik	Nut	Mutter	M 20 Stål
15		Fjederskive	Spring Coller	Federscheibe	Ø 20 mm.
16	1001095	Tætningsring	Nut Ring	Nutring	Ø90/110 x 10 mm. Blød
16	1102138	Tætningsring	Nut Ring	Nutring	Ø90/110 x 10 mm. Hård
17	1007097	Bøjning	Bend	Winkel	M/ 2 neddrejninger
18		Bolt	Bolt	Schraube	M12 x 35 mm
19		Møtrik	Nut	Mutter	M 12
20		Fjederskive	Spring Coller	Federscheibe	Ø 12 mm.
21		Låsemøtrik	Nut	Mutter	M 12
22	16200726	Spændebånd	Hous Clip	Schlauchspange	Ø 86/91
23	1005151	Slange	Hose	Schlauch	Ø 90 x 990 mm.
24	16200730	Spændebånd	Hous Clip	Schlauchspange	Ø 98 - 103 mm. Ø100 sl.
24	16200732	Spændebånd	Hous Clip	Schlauchspange	Ø 104 - 112 mm. Ø110 sl.
25		Slange	Hose	Schlauch	Ø 100 mm.
25		Slange	Hose	Schlauch	Ø 110 mm.
26		Brædebolte	Carriage Bolt	Schwellenschraube	M6 x 35
27	1001304	Bremsekloids	Brake Lining	Bremsbelag	
28	1001120	Bremsearm	Brake Shaft	Bremswelle	
29	761110	Fjeder	Spring	Feder	Ø6 x 175 mm.
30	1001297	Beslag	Fittings	Beschlag	
31	761112	Bremsehåndtag	Ratcet	Bremshebel	
33	761338	Kædeled	Chain Link	Kettenglied	Ø 6 mm.
34		Møtrik	Nut	Mutter	M 10
35		Fjederskive	Spring Coller	Federscheibe	Ø 10 mm.
36		Fladskive	Tension Disk	Spannscheibe	Ø 10 mm.
37	1001098	Leje, Komplet	Ball Bearing, Complete	Kugellager, Komplet	UCP 218
38		Bolt	Bolt	Schraube	M12 x 40 mm
39		Bolt	Bolt	Schraube	M10 x 40 mm
40	2351316	Skærm	Shield	Schirm	
40	2351317	Ramme	Frame	Rahmen	
42	2351318	Ramme	Frame	Rahmen	
43	2351378	Skærm	Shield	Schirm	
45	761275	Aksel	Axle	Achse	Ø 20 x 85 mm.
46	761276	Kugleleje	Bearing	Lager	
47	2351277	Kædehjul	Sprocket Wheel	Kettenrad	
48	2351278	Kædehjul, Komplet	Sprocket Wheel, Complete	Kettenrad , komplett	
49	2351342	Remskive	V-Belt Pulley	Keilriemenscheibe	Ø620 mm.
50	761331	Beslag	Fittings	Beschlag	
51		Bolt	Bolt	Schraube	M10 x 25 mm.
52	761306	Værktøjsplade	Sheet	Platte	
53	1761317	Ramme	Frame	Rahmen	
54	1761316	Skærm	Shield	Schirm	
55	1001302	Bremsesko	Fittings	Beschlag	



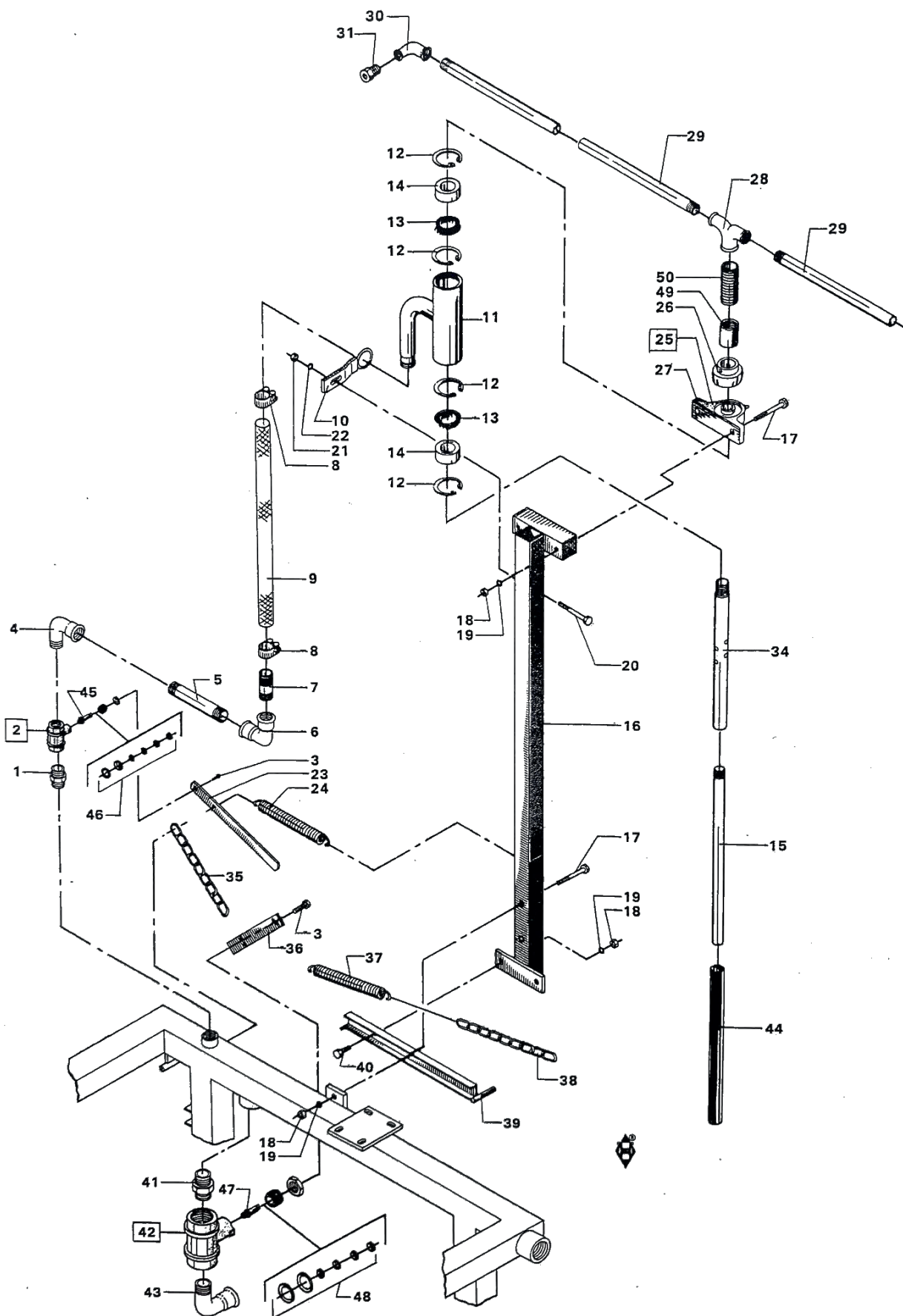
Pos. nr. Pos. No. Pos. Nr.	Best. nr. Part No. Teil Nr.	Benævnelse	Description	Bezeichnung	Bemærkninger Remarks Bemerkungen
1	761383	Stålbolt	Steel Bolt	Stahlbolzen	5/8" x 80 mm UNF
2	761384	Låsemøtrik	Lock Nut	Mutter	5/8"UNF
3	761102	Beslag	Fittings	Beschlag	
4	761003	Møtrik	Nut	Mutter	16 mm
5	761032	Fjederskive	Spring Coller	Federscheibe	16 mm
6	761126	Maskinbolt	Engine Bolt	Maschinenschraube	16 x 120 mm
7	761103	Maskinbolt	Engine Bolt	Maschinenschraube	16 x 90 mm
8	1001104	Strammerullearm	Fittings	Beschlag	
10	761249	Simmerring	Oil Seal	Abdichtring	
11	761105	Leje	Ball Bearing	Rollerlager	6004
12	761106	Strammerulle	Tension Roller	Spannrolle	
13	761065	Låsering	Snap Ring	Seegerring	U 20 mm
14	761107	Dæksel	Capsule	Kapsel	
15	761061	Møtrik	Nut	Mutter	12 mm
16	761099	Fjederskive	Spring Coller	Federscheibe	12 mm
17	761111	Maskinbolt	Engine Bolt	Maschinenschraube	12 x 25 mm
18	761117	Beslag	Fittings	Beschlag	
19	761012	Kause	Thimbles	Kausche	1/2" galv.
20	761013	Wirelås	Wire Lock	Drahtsperrin	1/4"
21	1761118	Wire	Steel Wire	Stahldraht	1/4" x 290 cm
22	761015	Wirerulle	Wire Roller	Drahtrolle	Stål/Steel/Stahl
23	761114	Stålbolt	Steel Bolt	Sechskantschraube	10 x 25 stål/steel/Stahl
24	761017	Møtrik	Nut	Mutter	10 m
25	761115	Maskinbolt	Engine Bolt	Maschinenschraube	12 x 35 mm
26	761083	Maskinbolt	Engine Bolt	Maschinenschraube	10 x 40 mm
27	761252	Låsemøtrik	Nut	Mutter	M12 Nyloc
28	761113	Koblingshåndtag	Coupling Lever	Kupplungsgriff	
29	761119	Fjeder	Spring	Feder	ø5 x 180
30	761338	Kædeled	Chain Link	Kettenglied	6 mm
31	2351104	Strammerullearm	Fittings	Beschlag	
32	761112	Koblingshåndtag	Coupling Lever	Kupplungsgriff	
33	2351131	Dæk	Tyre	Reifen	11,2 - 10 x 28" x 8 lag
34	761377	Maskinbolt	Engine Bolt	Maschinenschraube	10 x 30 mm
35	761130	Slange	Tube	Schlauch	10 x 28"
36	761129	Fælg	Rim	Felge	10 x 28"
37	761124	Stålbolt	Steel Bolt	Sechskantschraube	16 x 220 mm
38	761127	Plade	Sheet	Platte	
39	2351122	Remskive	V-Belt Pulley	Keilriemenscheibe	ø510
40	1001123	Kilerem	V-Belt	Keilriemen	E 210
41	311187	Navbolt	Hub Bolt	Nabebolzen	9/16"UNF
42	761128	Møtrik	Nut	Mutter	9/16"UNF
43	2351335	Fælgplade	Bowl	Schüssel	10 mm



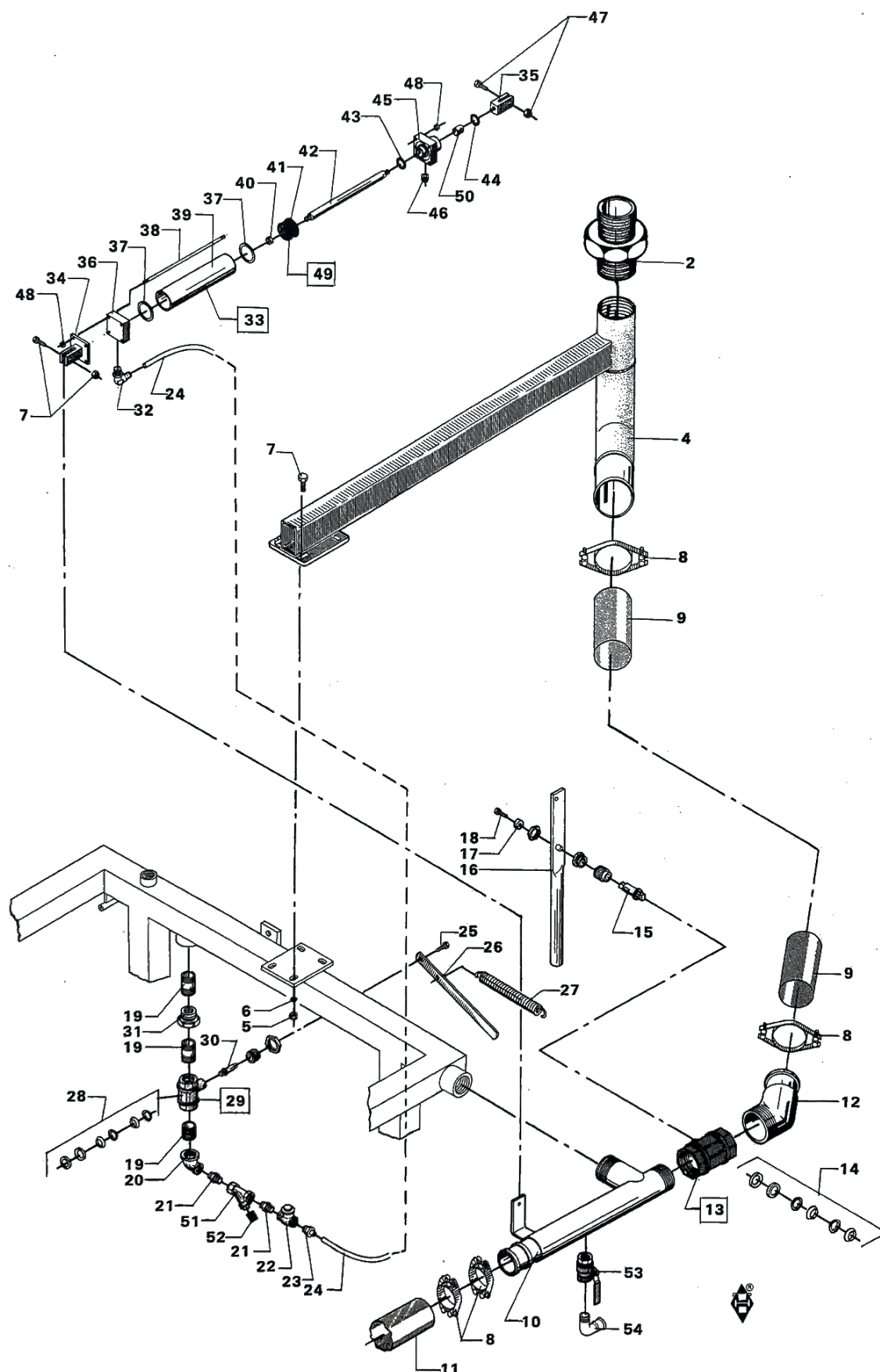
Pos. nr. Pos. No. Pos. Nr.	Best. nr. Part No. Teil Nr.	Benævnelse	Description	Bezeichnung	Bemærkninger Remarks Bemerkungen
1	2351166	Beslag	Fittings	Beschlag	7/16" x 32UNC M12 12 mm
2	027211932	Sætskrue	Set Screw	Setzschraube	
3	761061	Møtrik	Nut	Mutter	
4	761074	Fjederskive	Spring Coller	Federscheibe	
5	761260	Gear	Gear	Getriebe	
6	761257	Beslag	Fittings	Beschlag	1/2" x 38 UNC 12 x 80 mm 3/4" Duplex 3/4" Duplex
7	761266	Stålbolt	Steel Bolt	Stahlbolzen	
8	761170	Maskinbolt	Engine Bolt	Maschinenbolzen	
9	761171	Rullekæde	Roller Chain	Rollenkette	
10	761055	Samler	Assembly Link	Sammelglied Gerade	
11	2351173	Kædehjul	Sprocket Wheel	Kettenrad	12 TD, udb. - ø28,35
12	761258	Kædehjul	Sprocket Wheel	Kettenrad	12 TD, udb. - ø32,0
13	761259	Kædehjul	Sprocket Wheel	Kettenrad	12 TD, udb. - ø22,0
14	761176	Kædehjul	Sprocket Wheel	Kettenrad	12 TD, udb. - ø30,0
15	761264	Pasfeder	Tongue	Passfeder	
16	761265	Pasfeder	Tongue	Passfeder	
17	761180	Unbracoskrue	Allen Screw	Innenschkantschraube	10 x 10 mm
18	2351181	Skærm	Shiels	Schirm	
19	2351182	Beslag	Fittings	Beschlag	1/2" x 15 UNC
20	761385	Bolt	Bolt	Schraube	
21	761386	Gummistrop	Rubber	Gummi	
22	761387	Gummiskærm	Rubber Shield	Gummi Schirm	
23	761183	Gummiskærm	Rubber Shield	Gummi Schirm	
24	761184	Håndhjul	Crank	Handrad	
25	1761261	Aksel	Axle	Achsel	ø30 x 2300
26	1761014	Wire	Wire	Draht	1/4" x 6450 mm
27	761013	Wirelås	Wire Lock	Drahtsperrin	1/4"
28	761012	Kouse	Thimbles	Kausche	1/4" galv.
29	761186	Kæde	Chain	Kette	3 mm - 10 led
30	761187	Sjækkel	Shackle	Schäkel	1/4"
31	761188	Øjesplint	Ringpin	Ringsplint	
32	1001189	Bøjle	Clamp	Bügel	
33	761115	Maskinbolt	Engine Bolt	Maschinenbolzen	12 x 30 mm
34	761388	Kæde	Chain	Kette	
35	761032	Fjederskive	Spring Coller	Federscheibe	16 mm
36	761193	Træk	Drawbar	Zugstange	
37	761190	Maskinbolt	Engine Bolt	Maschinenbolzen	16 x 35 mm
38	761274	Fjeder	Spring	Feder	3,5 x 250 mm
39	761389	"S"-hage	"S"-Chain	"S"-Kette	
40	761321	Beskyttelsesrør	Tube	Rohrstück	40 x 300 mm
41	761463	Bolt	Bolt	Schraube	
42	761469	Simmerring	Oil Seal	Abdichtring	24 x 40 x 7
43	761461	Dæksel	Cap	Deckel	
44	761471	Justerchims	Shim	Beilage	
45	761466	Løje	Bearing	Lager	7305 B
46	761467	Snækkeaksel	Axle	Achsel	
47	761462	Dæksel	Cap	Deckel	
48	761470	Prop	Plug	Kappe	
49	761474	Bolt	Bolt	Schraube	
50	761473	Dæksel	Cap	Deckel	
51	761475	Justerchims	Shim	Beilage	
52	761481	Løje	Bearing	Lager	7207 B
53	761472	Simmerring	Oil Seal	Abdichtring	32 x 52 x 7
54	761478	Afstandsrør	Pipe	Rohr	
55	761476	Snækkehjul	Gear Wheel	Zahnrad	
56	761479	Pasfeder	Key	Pasfeder	
57	761482	Aksel	Axle	Achsel	
58	761480	Dæksel	Cap	Deckel	
59	761390	Nippel	Nipple	Nippel	3/8" x 1/4"
60	761391	Smørenippel	Grease Nipple	Schmiernippel	1/4" R



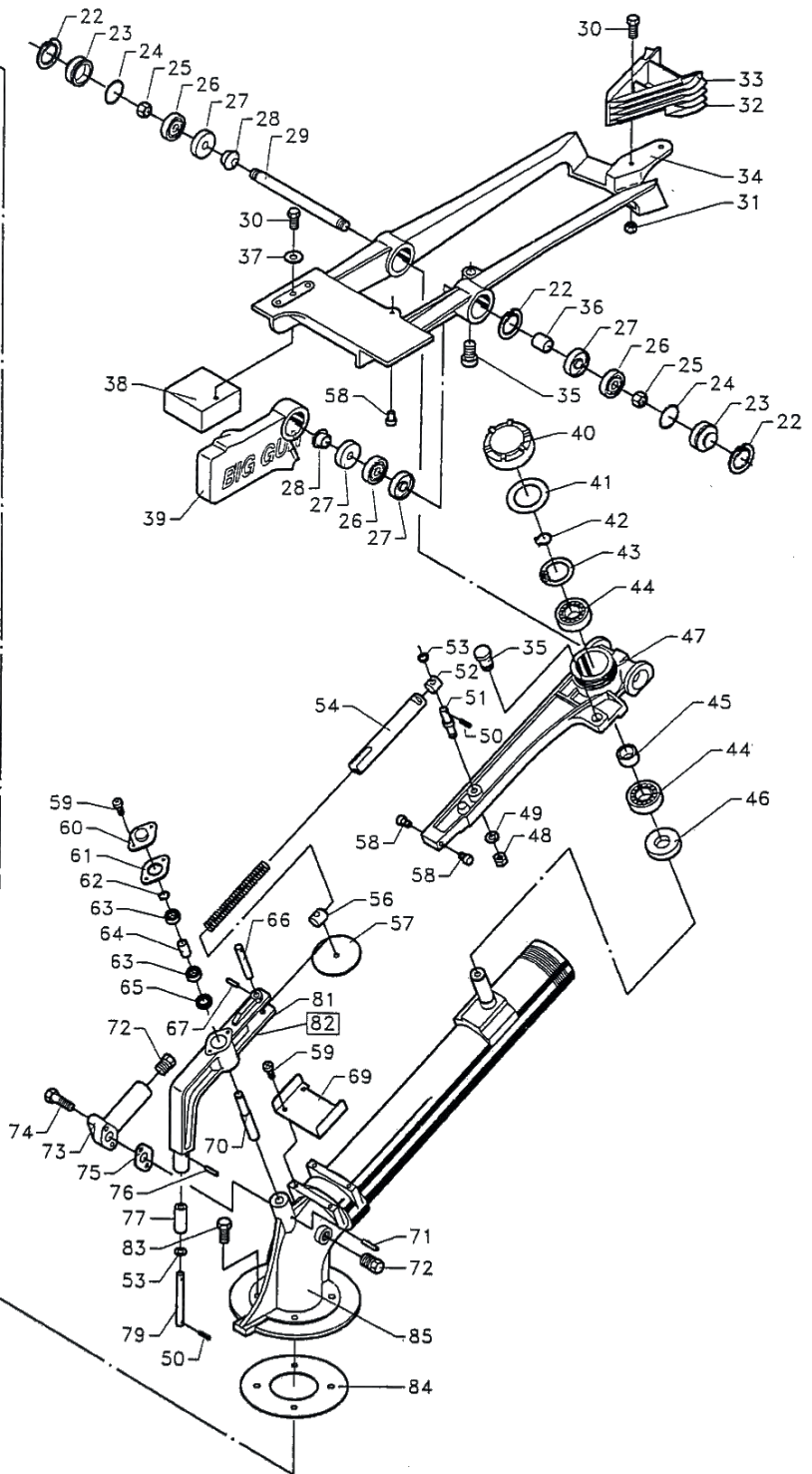
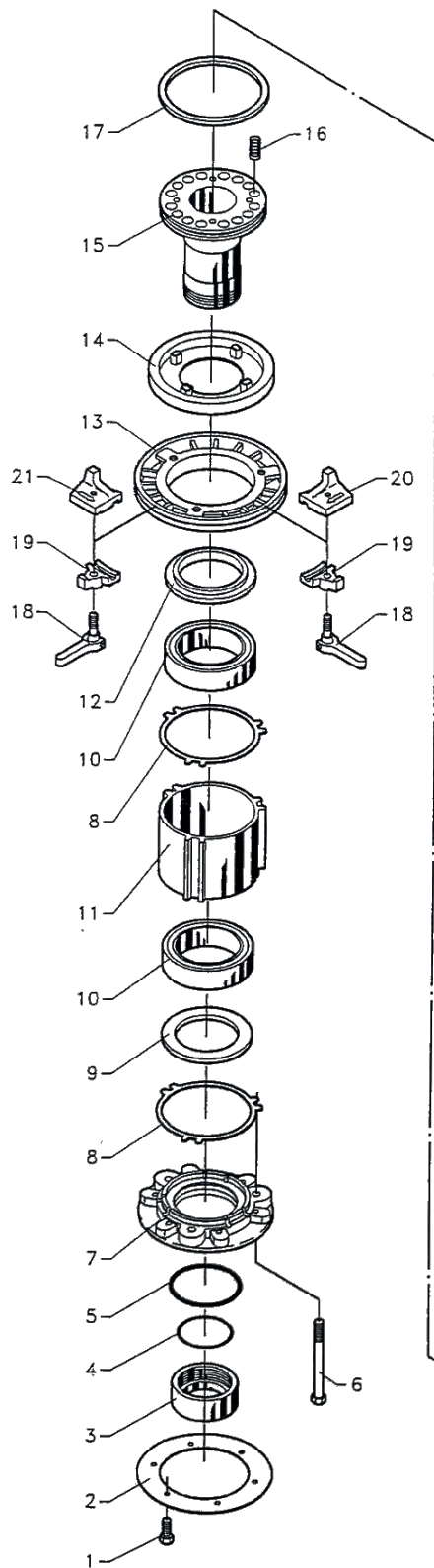
Pos. nr. Pos. No Pos. Nr.	Best.. nr. Part No Teil Nr.	Benævnelse	Description	Bezeichnung	Bemærkninger Remark Bemerkungen
1	762130	Gearhus	Gear	Getriebe	
	762100	Gear kpl.	Gea, complete	Getriebe, Komplet	
2	762135	Åben dæksel	Cap	Deckel	
3	762140	Lukket dæksel	Cap	Deckel	
4	762145	Åben indg. dæksel	Cap	Deckel	
5	762150	Lukket indg. dæksel	Cap	Deckel	
6	762155	Snekkehjul	Gear Wheel	Zahnrad	
7	762160	Snekkeaksel	Axle	Achsel	
	762120	Kædehjul	Sprocket Wheel	Kettenrad	3/4" x 12T udb.Ø24,0
8	762165	Udgangsaksel	Axle	Achsel	
	761258	Kædehjul	Sprocket Wheel	Kettenrad	3/4" x 12T udb.Ø32,0
9	762170	Kugleleje	Bearing	Lager	6305 2RS
10	762175	Kugleleje	Bearing	Lager	6305
11	762180	Kugleleje	Bearing	Lager	6210
12	762185	Tætningsring	Oil Seal	Abdichtring	Ø25/52 x 7,0
13	762190	Tætningsring	Oil Seal	Abdichtring	Ø42/72 x 10,0
14	762195	O-ring	O-ring Seal	O-Ring	Ø 61,60 x 2,62
15	762200	O-ring	O-ring Seal	O-Ring	Ø 129,5 x 3,00
16	762205	Feder	Key	Pasfeder	6x6x30 A
17	762210	Feder	Key	Pasfeder	10x8x50 A
18	762215	Feder	Key	Pasfeder	14x9x29 B
19	762220	Låsering	Sanp Ring	Seegering	U 55
20	762225	Gammaring	Oil Seal	Abdichtring	
21	762230	Bolt	Bolt	Schraube	M8 x 16
	762110	Beslag	Fittings	Beschlag	



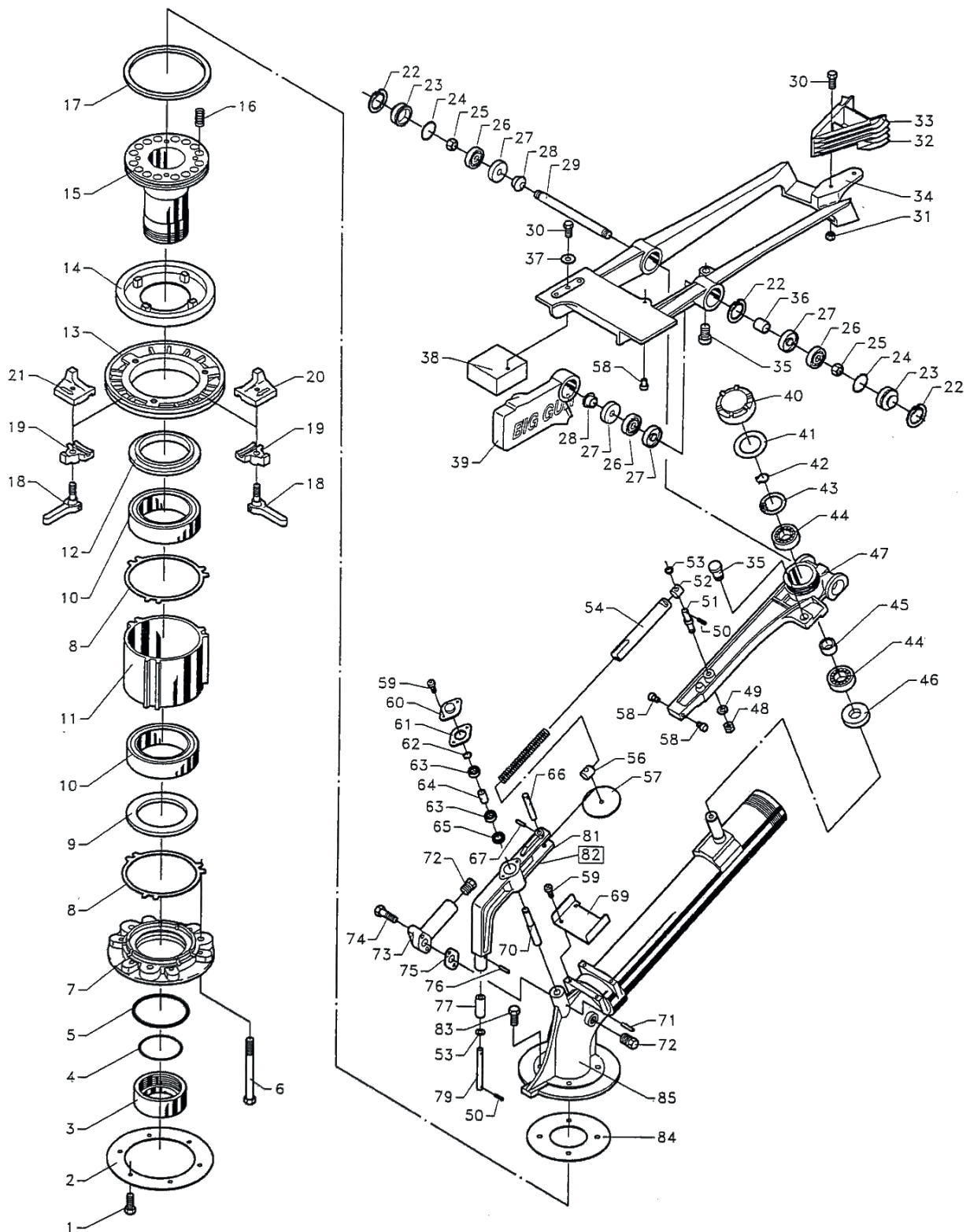
Pos. nr. Pos. No. Pos. Nr.	Best. nr. Part No. Teil Nr.	Benævnelse	Description	Bezeichnung	Bemærkninger Remarks Bemerkungen
1	761196	Brystnippel	Nipple	Nippel	1"
2	761197	Kugleventil	Valve	Ventil	1"
3	761198	Stålbolt	Steel Bolt	Stahlbolzen	6 x 12 mm
4	761199	Bøjning	Bend	Krümmen	1"
5	761200	Rør	Pipe	Rohr	1" x 200 mm
6	761201	Bøjning	Bend	Krümmen	1"
7	761202	Rør	Pipe	Rohr	1" x 90 mm
8	761203	Spændebånd	Hose Clip	Schlauchschele	38 mm
9	1761204	Slange	Hose	Schlauch	5/4" x 1000 mm
10	761205	Beslag	Fittings	Beschlag	
11	761206	Rotorhus	Housing	Haus	
12	761207	Låsering	Snap Ring	Seegerring	160 mm
13	761208	Tætningsring	Nut Ring	Nutring	35 x 60 x 12
14	761209	Nylonleje	Coller Linings	Nylonbuchse	
15	1761261	Aksel	Axle	Achse	ø30 x 2300
16	1761300	Tårn	Bracket	Konsole	
17	761170	Maskinbolt	Engine Bolt	Maschinenbolzen	M12 x 80
18	761061	Møtrik	Nut	Mutter	M12
19	761099	Fjederskive	Spring Coller	Federscheibe	12 mm
20	761212	Maskinbolt	Engine Bolt	Maschinenbolzen	10 x 65 mm
21	761017	Møtrik	Nut	Mutter	M10
22	761073	Fjederskive	Spring Coller	Federscheibe	10 mm
23	761213	Håndtag	Lever	Handgriff	
24	761274	Fjeder	Spring	Feder	3,5 x 250 mm
25	761215	Stålleje, komplet	Ball Bearing, complete	Kugellager, komplett	UCP 207
26	761216	Leje	Bearing	Lager	UC 207
27	761217	Lejehus	Bearing Housing	Lagerhaus	P 207
28	761218	Tee	Tees	T-Stück	1" x 3/4" x 3/4"
29	761219	Rør	Pipe	Rohr	3/4" x 1500 mm
30	761220	Vinkel	Ancle	Winkelstück	3/4" x 3/8"
31	761221	Dyse	Nozzle	Düse	3/8" x 3/16"
34	761263	Rotorrør	Pipe	Rohr Rostfrei	35 x 480 mm
35	761228	Kæde	Chain	Kette	4 mm x 9 led
36	761227	Håndtag	Lever	Handgriff	
37	761011	Fjeder	Spring	Feder	3,5 x 330 mm
38	761230	Kæde	Chain	Kette	6 mm x 7 led
39	761231	Beslag	Fittings	Beschlag	
40	761115	Maskinbolt	Engine Bolt	Maschinenbolzen	12 x 35 mm
41	761224	Brystnippel	Nipple	Nippel	2"
42	761225	Kuglehane	Valve	Ventil	2"
43	761279	Vinkel	Ancle	Winkelstück	2"
44	761320	Rør	Pipe	Rohr	40 mm x 1500 mm
45	761332	Spindel	Spindle	Spindel	
46	761334	Pakningssæt	Gasket Set	Packung	
47	761333	Spindel	Spindle	Spindel	
48	761335	Pakningssæt	Gasket Set	Packung	
49	761392	Muffe	Nipple	Nippel	1"
50	761393	Nippelrør	Pipe	Rohr	1" x 100 mm



Pos. nr. Pos. No. Pos. Nr.	Best. nr. Part No. Teil Nr.	Benævnelse	Description	Bezeichnung	Bemærkninger Remarks Bemerkungen
2	000280413	Brystnippel	Nipple	Nippel	2 1/2"
4	1001307	Kanonbeslag	Fittings	Beschlag	
5	761061	Møtrik	Nut	Mutter	M12
6	761100	Skive	Tension Disk	Spannscheibe	ø12
7	761115	Maskinbolt	Engine Bolt	Maschinenbolzen	M12 x 40
8	1001019	Spændebånd	Hose Clip	Schlauchschele	Nr. 95
9	1001314	Slange	Hose	Schlauch	
10	1001343	Tee	Tees	T-Stück	3"
11	1001101	Slange	Hose	Schlauch	ø90 x 1400
12	1001344	Bøjning	Elbow	Biegung	
13	1001345	Kuglehane, komplet	Valve, complete	Ventil, komplett	3"
14	1001347	Reparationssæt	Gasket	Packung	
15	1001346	Spindel	Spindle	Spindel	
16	1001348	Håndtag	Lever	Handgriff	
17	1001349	Skive	Collar	Scheibe	
18	761350	Bolt	Engine Bolt	Maschinenschraube	
19	761370	Nippelrør	Nipple	Nippel	1" x 40 mm
20	761368	Vinkel	Angle	Winkelstück	1" x 1/2"
21	761367	Nippel	Nipple	Nippel	1/2"
22	761374	Kontraventil	Valve	Ventil	1/2"
23	591168	Nippel	Nipple	Nippel	1/2" x 8 mm
24	761371	Slange	Hose	Schlauch	8 mm x 1350 mm
25	761198	Stålbolt	Steel Bolt	Stahlbolzen	6 x 12 mm
26	761375	Håndtag	Lever	Handgriff	
27	761011	Fjeder	Spring	Feder	3,5 x 330 mm
28	761334	Pakningssæt	Gasket Set	Packung	
29	761197	Kugleventil	Valve	Ventil	1"
30	761332	Spindel	Spindle	Spindel	
31	761369	Nippelmuffe	Nipple	Nippel	2" x 1"
32	591185	Vinkelnippel	Angle	Winkelstück	1/4" x 8 mm
33	761364	Cylinder, komplet	Cylinder, complete	Zylinder, komplett	ø50 x 200
34	761366	Bagplade	Fittings	Beschlag	
35	761357	Gaffel	Fork	Gabel	
36	761351	Bundstykke	Rear Cover	Bodenstück	
37	761362	Pakning	Gasket	Packung	
38	761361	Samlebolt	Bolt	Bozlen	
39	761359	Cylinderrør	Cylinder Box	Zylindergehäuse	
40	761358	Møtrik	Nut	Mutter	
41	761352	Stempelhoved	Piston Head	Kolbenkopf	
42	761360	Stempelstang	Piston	Kolben	
43	761353	Nutring	Gasket	Packung	
44	761354	Afstryger	Polisher	Abstreifer	
45	761356	Topstykke	Sliding Box	Schieberhaus	
46	761376	Luftskruer	Plug	Pfropfen	
47	761377	Bolt med møtrik	Bolt with Nut	Bolzen mit Mutter	
48	761091	Møtrik	Nut	Mutter	
49	761363	Pakningssæt	Gasket Set	Packung, komplett	
50	761355	Bøsning	Bush	Buchse	
51	761379	Filter			
52	761380	Si			

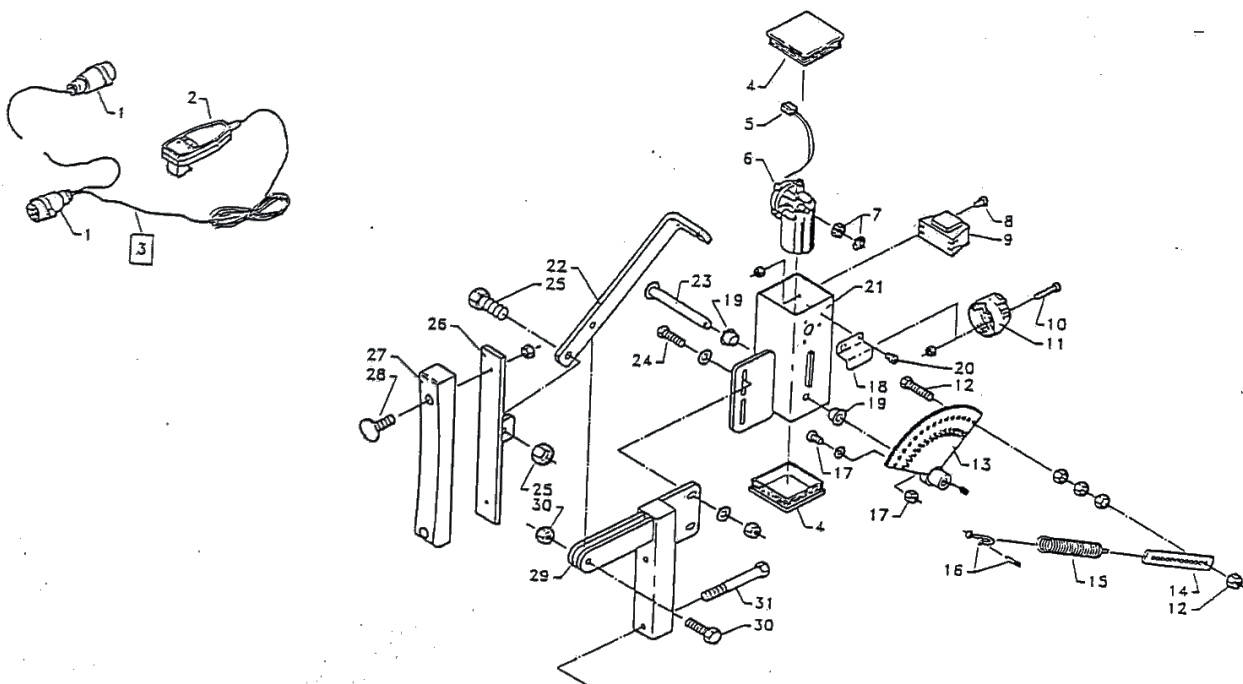


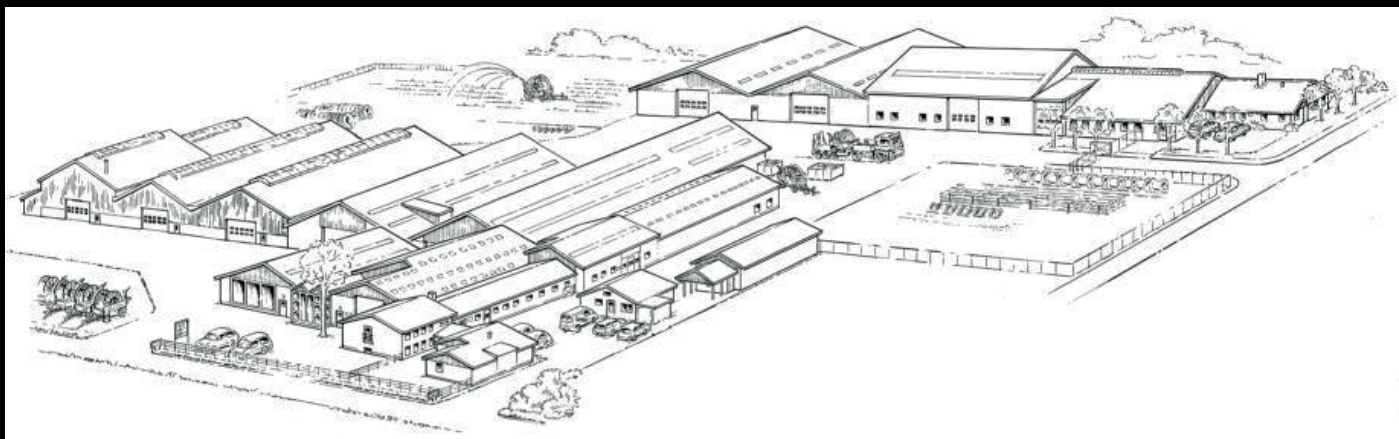
Pos. nr. Pos. No Pos. Nr.	Best. nr. Part No Teil Nr.	Benævnelse	Description	Bezeichnung	Bemærkninger Remark Bemerkungen
1	776000	Bolt	Bolt	Schraube	M8 x 25 mm.
2	761614	Pakning	Gasket	Packung	
3	778402	Låsemøtrik	Nut	Mutter	
4	776548	O-ring	O-ring Seal	O-Ring	
5	778475	O-ring	O-ring Seal	O-Ring	
6	778462	Bolt	Bolt	Schraube	3/8" x 115 UNC
7	778401	Bundstykke	Flange	Flansch	
8	778461	Pakning	Gasket	Packung	
9	778373	Tætningsring	Nut Ring	Nutring	
10	776253	Kugleleje	Bearing	Lager	
11	778405	Lejehus	Bearing Housnig	Lagerhaus	
12	778372	Tætningsring	Nut Ring	Nutring	
13	778400	Bremeskive	Disk Brake	Bremsscheibe	
14	778371	Bremsebelægning	Brake Lining	Bremssbelag	
15	778459	Lejerør	Bearing pipe	Lager rohr	
16	778474	Fjeder	Spring	Feder	
17	778473	Tætningsring	Nut Ring	Nutring	
18	776849	Tee-bolt	Bolt	Schraube	
19	776371	Beslag	Fittings	Beschlag	
20	778432	Stopklods	Stop Counterclockwise	Anschlag	
21	778431	Stopklods	Stop Clockwise	Anschlag	Indv. Ø32 mm.
22	776565	Låserring	Snap Ring	Seegerring	
23	776602	Endedæksel	Cap	Deckel	
24	776563	O-ring	O-ring Seal	O-Ring	
25	776603	Møtrik	Nut	Mutter	
26	776598	Kugleleje	Bearing	Lager	Ø15 x 32 x 7,0 mm.
27	776600	Tætningsring	Nut Ring	Nutring	
28	776607	Afstandsrør	Pipe	Rohr	
29	778465	Aksel	Axle	Achsel	
30	776818	Bolt	Bolt	Schraube	
31	776060	Bolt	Bolt	Schraube	1/4" x 20 UNC
32	778354	Drivkniv	Vane/Spoon Bracket	Antriebslöffelteäger	
33	779229	Tospeed drivkniv	Vane/Spoon Bracket	Antriebslöffelteäger	
34	778364	Drivkniv	Vane/Spoon Bracket	Antriebslöffelteäger	
35	778139	Gummistop dæmper	Bumber	Stossdämpfer	
37	776070	Fladskive	Tension Disk	Spannscheibe	1/4"
38	778433	Vægtklods	Counter Weight	GegenWicht	
39	778125	Kontravægt	Counter Weight	GegenWicht	
40	778233	Dæksel	Cap	Deckel	
41	778272	Pakning	Gasket	Packung	
42	778323-017	Låserring	Snap Ring	Seegerring	Indv. Ø40 mm.
43	776045	Låserring	Snap Ring	Seegerring	
44	776054	Kugleleje	Bearing	Lager	
45	778326	Afstandsrør	Pipe	Rohr	
46	776048	Tætningsring	Nut Ring	Nutring	
47	778394	Omskifter arm	Return Lever	Rückholhebel	5/16" UNC
48	776064	Møtrik	Nut	Mutter	
49	777029	Fladskive	Tension Disk	Spannscheibe	
50	776714	Split	Split Pin	Splint	
51	778197	Bolt	Bolt	Schraube	
52	778282	Aksel	Axle	Achsel	Ø6,0 mm.
53	778409	Fladskive, kobberskive	Tension Disk	Spannscheibe	
54	778446	Rør	Pipe	Rohr	
55	778470	Fjeder	Spring	Feder	
56	778417	Aksel	Axle	Achsel	



Pos. nr. Pos. No Pos. Nr.	Best.. nr. Part No Teil Nr.	Benævnelse	Description	Bezeichnung	Bemærkninger Remark Bemerkungen
58	776580	Anslagsstift	Restpadsinsert	Splint	
59	778311	Bolt	Bolt	Schraube	
60	778263	Dæksel	Cap	Deckel	
61	778265	Pakning	Gasket	Packung	
62	778323-004	Låserring	Snap Ring	Seegerring	
63	778321	Leje	Bearing	Lager	
64	778281	Afstandsør	Pipe	Rohr	
65	778317	Pakning	Gasket	Packung	Ø9,0 x 22 x 5,0 mm.
66	778193	Stift	Split Pin	Splint	
67	778320	Split	Split Pin	Splint	
69	778448	Plade	Sheet	Platte	
70	778274	Aksel	Axle	Achsel	
71	776931	Låsestift	Split Pin	Splint	Ø3,2 x 20 mm.
72	776089	Prop	Plug	Kappe	
73	778497	Dysserør	Elbowsecon	Strahlrohr	
74	776059	Bolt	Bolt	Schraube	1/4" x 32 mm. UNC
75	778511	Pakning	Gasket	Packung	
76	778322	Split	Split Pin	Splint	
77	778277	Rulle	Roller	Trä	
79	778276	Aksel	Axle	Achsel	
81	778410	Arm	Revwrs Rod	Schaltgestänge	
82	778451	Kpl. Omskifter	Trip Lever Assy.	Schaltgelenk, Komplet	
83	778408	Bolt	Bolt	Schraube	5/16" x 25 UNC
84	778460	Pakning	Gasket	Packung	
85	778587	Strålerør	Elbow/Range Tube	Strahlrohr	

Pos. nr. Pos. No Pos. Nr.	Best.. nr. Part No Teil Nr.	Benævnelse	Description	Bezeichnung	Bemærkninger Remark Bemerkungen
1	1008965	Stik (han)	Pulg	Steck	
2	1008970	Håndtag med kabel	Lever	Hebel	
3	1008971	Håndtag kpl.	Lever	Hebel	
4	1007155	Endeprop	Plug	Kappe	
5	1007182	Stik	Pulg	Steck	
6	1007180	Motor	Engine	Motor	12 v.
7	1007190	Tandhjul	Cogwheel - Small	Zahnrad - Klein	10 T.
8		Bolt	Bolt	Bolzen	M5 x 10
9	1008955	Relæg	Relay	Relay	
10		Bolt	Bolt	Bolzen	M5 x 30
11	1008960	Skik (hun)	Pulg	Steck	
12		Bolt	Bolt	Bolzen	M8 x 16
13	1007195	Tandhjul	Cogwheel - Small	Zahnrad - Klein	1/3 del udb. ø16
14	1008925	Hulplade	Fittings	Beschlag	
15	761119	Fjeder	Spring	Feder	ø5 x 32 x 175 mm.
16	761187	Sjækel	Shackle	Schäkel	ø6 mm.
17		Bolt	Bolt	Bolzen	M8 x 16 indiv. 6-kant
18	1008945	Skærm	Shield	Schirm	
19	RI5062	Bøsning	Bushing	Buchse	ø16/24 x 15 mm.
20	872138	Bolt	Bolt	Bolzen	ø4,2 x 9,5 mm
21	1008905	Motorhus	Enginehousing	Motorhaus	
22	1008915	Arm	Shaft	Umlenkhebel	
23	1008920	Aksel	Axle	Achse	
24		Bolt	Bolt	Bolzen	M10 x 35
25		Bolt	Bolt	Bolzen	M16 x 40
26	902119	Bremseko	Fittings	Beschlag	
27	902120	Bremseklods	Brake Lining	Bremsbelag	
28		Bræddebolt	Carriage Bolt	Schwellenschraube	M8 x 40
29	1008910	Beslag	Fittings	Beschlag	TL 235 S
29	1008912	Beslag	Fittings	Beschlag	TL 100 S
	1008930	Beslag	Fittings	Beschlag	
	1008935	Spændplade	Sheet	Platte	
30		Bolt	Bolt	Bolzen	M12 x 45
31		Bolt	Bolt	Bolzen	M12 x 110





FASTERHOLT

**A/S FASTERHOLT MASKINFABRIK
EJSTRUPVEJ 22, DK-7330 BRANDE
DENMARK**

TEL.: +45 97 18 80 66 FAX: +45 97 18 80 40

E-MAIL: MAIL@FASTERHOLT.DK

www.fasterholt.dk