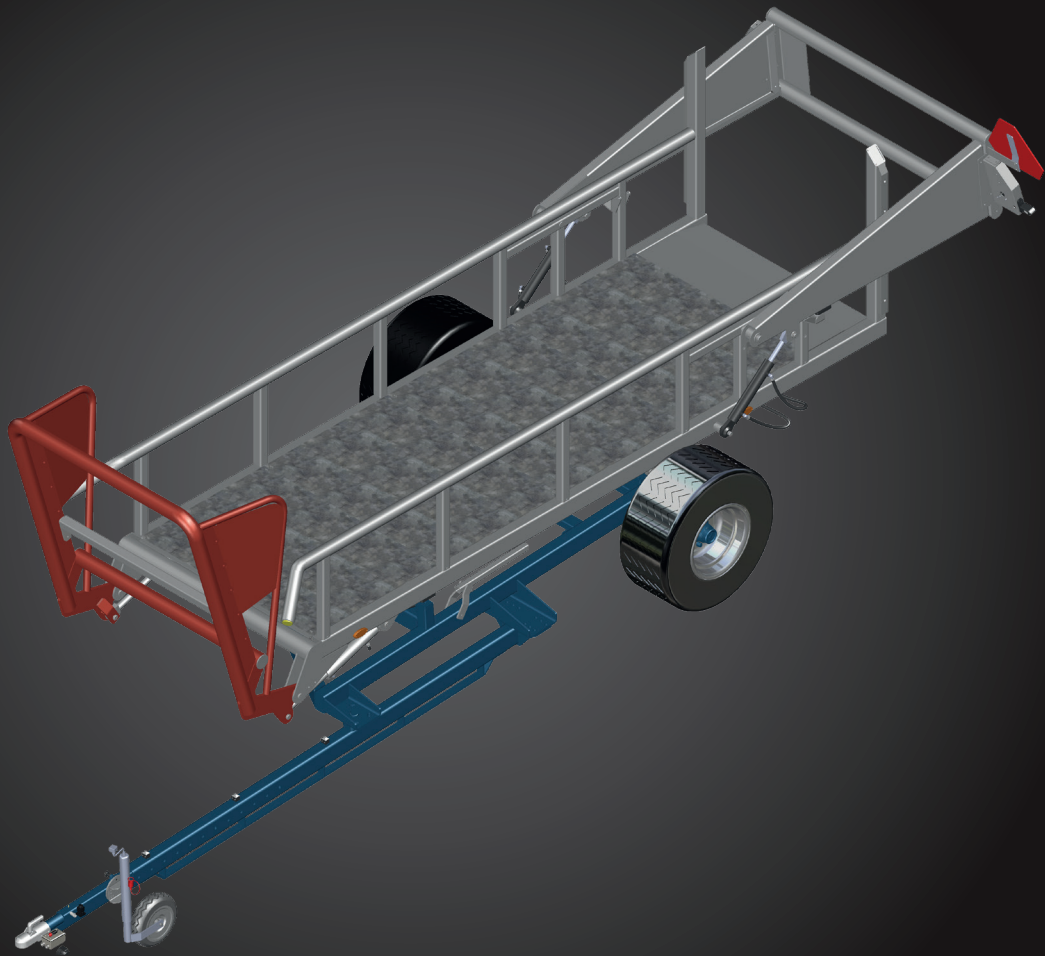


**User Manual &
Spare Parts Catalogue**

(EN) 22-05-2024



Round Bale Trailer RB-3



Fasterholt Maskinfabrik A/S
Ejstrupvej 22
7330 Brande
Denmark

Tel.: +45 97 18 80 66
Telefax: +45 97 18 80 40
Email: mail@fasterholt.dk
Web: www.fasterholt.dk

Declaration of Conformity	3
General safety	4
Intended use	4
Safety instructions/warnings	4
General safety rules	4
Product labelling	5
Symbols	5
Operating instructions	6
Securing the top frame	6
Adjusting the Round Bale Trailer	6
Using the Round Bale Trailer	6
Baling small bales	7
Operating functions	7
Faults on the Round Bale Trailer	7
Spare parts	8
Chassis and top frame	8
Loading bracket	10
Rear gate	12
Hydraulics overview	14
Wiring diagram	16

EEC Declaration of conformity

Manufacture (name and address):

Fasterholt Maskinfabrik A/S

Adresse: Ejstrupvej 22,
Fasterholt
Ort: 7330 Brande
Country: Denmark
Web: www.fasterholt.dk

CVR: 58 83 28 12
TEL: +45 97 18 80 66
FAX: +45 97 18 80 40
E-Mail: mail@fasterholt.dk

Hereby is certified that the following product:

Description, ID/mark, type: Round Bale Trailer RB-3

Serial No. if any: _____

Notified body if any: _____

EEC-type certificate if any: _____

Harmonised standards if any: EN 908:1999+A1:2009.
DS/EN/ISO 12100:2011.
DS/EN/ISO 14120:2015.

Is made according to the announcement no.693 of 10. Jun 2013 that implements the DIRECTIV 2006/42/EC.

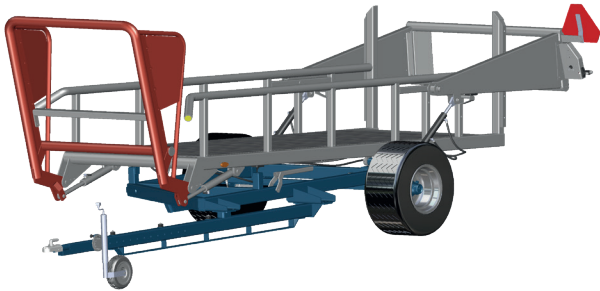
Name, title and signature of manufacture:

Date


Signature

!!! IMPORTANT !!!

READ THIS MANUAL BEFORE USING YOUR ROUND BALE TRAILER RB3!!!



Operating instructions for Fasterholt RB3 Round Bale Trailer

Your new Fasterholt Round Bale Trailer is a high quality, Danish built machine, but even the best machines only deliver top results when they are properly used and maintained.

To ensure that the machine complies with the EU Machinery Directive, only original spare parts may be used. Otherwise, compliance will be lost and safety will be entirely at your own risk.

Intended use

The Round Bale Trailer is built to transport 3 round bales. The trailer is pulled behind a round baler in the field, allowing the bales to be loaded onto the bale trailer after baling and unloading the bales together at one end of the field.

Anything else is not considered intended use. Fasterholt Maskinfabrik is not liable for damage resulting from unintended use.

The RB3 Round Bale Trailer may only be used and maintained by persons familiar with the RB3 Round Bale Trailer through relevant instruction and reading of the operating instructions, and in particular informed of the hazards associated with its use.

Any modifications made to the machine and its construction will relieve Fasterholt Maskinfabrik of all liability in the event of any resulting damage.

1. Safety instructions/warnings!

It is very important that users of the machine pay close attention to correct operation of the RB3 Round Bale Trailer so that they do not expose themselves or others to unnecessary danger.

It is therefore important to read these operating instructions before connecting the RB3 Round Bale Trailer to the Round Baler. The RB3 Round Bale Trailer should never be left with others until they have ensured that they have the knowledge to operate the machine correctly.

General safety rules

- Do not activate the RB3 until any persons are at a safe distance. Never allow children to stand near the machine during operation.
- Do not unload round bales with the RB3 until any persons are at a safe distance.
- Always disconnect the RB3 from the baler before lubricating, cleaning, separating and adjusting the machine.
- When connecting and disconnecting the RB3 to/from the baler, make sure that there are no persons between the RB3 and baler.
- Before activating the RB3, make sure that loose objects and tools have been removed from the machine.
- The bed must be properly positioned and undamaged before activating the RB3.
- Do not modify the bed on the RB3 or work with a RB3 without a bed.
- Do not work with loose clothing that can be pulled into moving parts on the RB3.
- Do not approach moving parts on the RB3.
- Always use the statutory lighting and safety markings when transporting on public roads and when driving at night.
- Limit the transport speed to the maximum speed specified on the RB3. If the machine is not labelled with a maximum permissible speed, the machine must be transported at a maximum of 25 km/h.
- Do not use the RB3 for any work other than that described under intended use.
- Never stand on the baler or another platform above the RB3 when the RB3 is in operation.
- Always lock the wheels when working under the RB3.
- Do not stand on the trailer during operation or transport.
- When parking the RB3, make sure the machine is on a level surface and the support wheel is properly secured.
- When working under the top frame, secure the top frame with the safety bracket.
- The pickup arm must be down in the lowest position at the adjustment stop to avoid accidents on the road (for adjustment stop, refer to page 12/13 position 27).
- The trailer must not be loaded during road transport.

Symbols

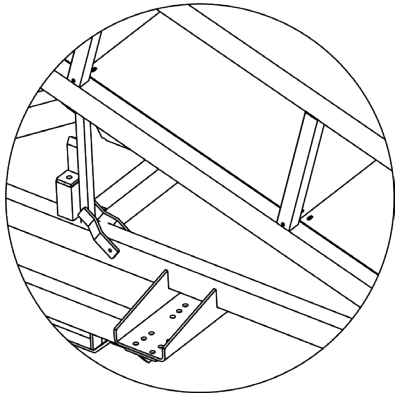
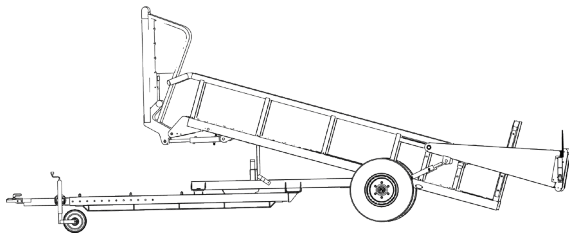
The following symbols are used in this product and the following documentation.



WARNING Indicates a potentially hazardous situation. Failure to avoid the situation may result in death or serious injury.
Danger Do not insert fingers into machine parts as this may cause serious injury.



LUBRICATION Indicates lubrication is required as per the service description.



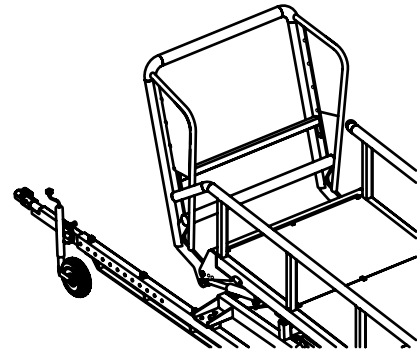
1. Securing the top frame with the safety bracket

- Remember to tighten the wheel bolts.
- DANGER! Avoid welding in the paint layer! Before welding, remove all paint from the welding area.
- Avoid inhalation of grinding dust.
- Hydraulic oil can be harmful to health:
- Skin contact may cause allergies.
- Inhalation of oil mist may cause lung disease.
- Leakage of oil under high pressure is dangerous, an oil jet can enter the skin, eyes, etc.
- If a leak is found on the trailer, stop the trailer immediately and rectify the fault.
- Note that due to operation, the oil may be 70 degrees Celsius or even hotter. This can lead to a risk of scalding during separation.
- Disposal of oil spills:
- If oil spills are found, they should be cleaned up immediately with rags or oil absorbent powder.
- Spilled products, as well as rags and powder used for oil spills, must be stored in sealed metal containers and delivered to the municipal collection site.

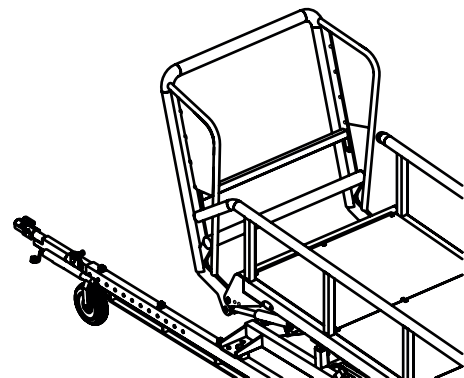
2. Adjusting the RB3 Round Bale Trailer before use

To connect the trailer to the drawbar of the baler, lower the trailer to the drawbar with the bale trailer's support wheel so that the trailer rests on the baler drawbar. Then loosen the support wheel at the locking pawl and rotate it so it is positioned horizontally on the trailer drawbar. Remember to secure the bale trailer with the safety pin! After installation, the bale trailer must be horizontal or lower at the rear than at the front.

- Connect the hydraulic hoses for the loading bracket, top frame and pickup arm to the double-acting output.
- Connect the light cable and the valve connector to the connector on the baler.



1. Support wheel in vertical position

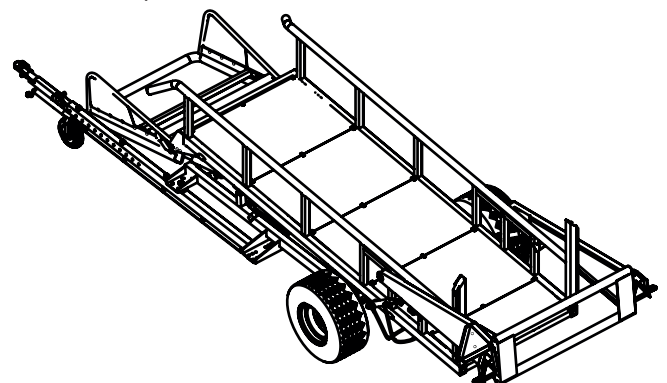


2. Support wheel in horizontal position

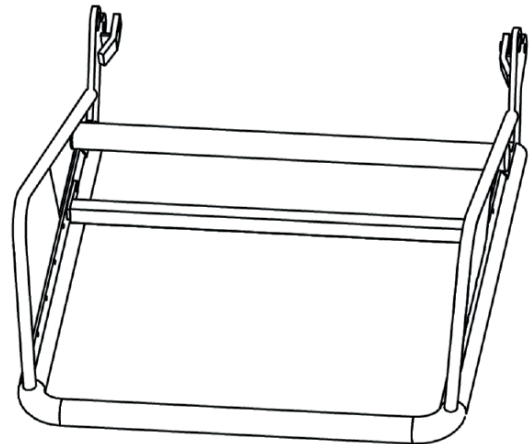
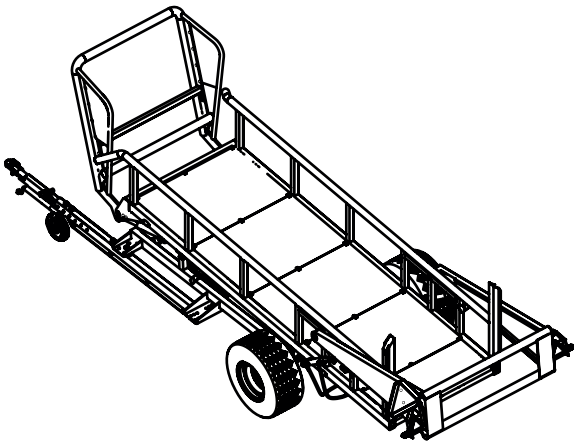
3. Using the Round Bale Trailer

The operator must be on the tractor when using the round bale trailer. In the tractor cab, the operator can switch bale trailer operation from loading, where the loading bracket lifts the bale onto the bale trailer, to unloading, where the top frame tilts up and the pickup arm opens at the rear.

To load the bale trailer, lift the round bale onto the bale trailer when it has been baled. After baling, the bale lands on the loading bracket, which is folded down. The loading bracket then tilts up and lifts the bale onto the top frame of the bale trailer. The bales roll back on the inclined trailer bed until the trailer is filled with 3 round bales. When the bale trailer is full, unload it at the required point, e.g. at the end of the field. When loading, the pickup arm at the rear is in the closed position and the top frame is not tilted up.

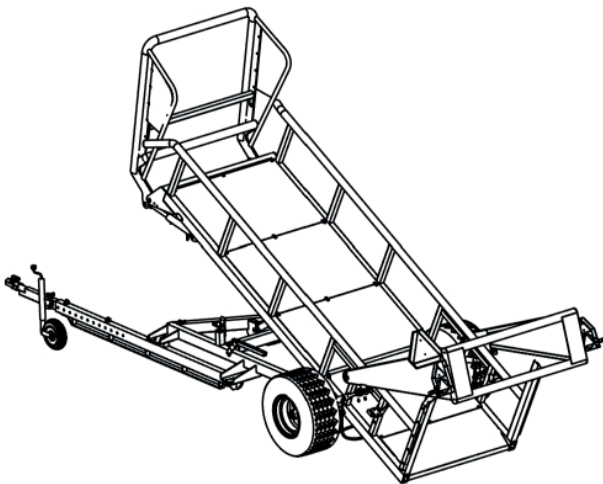


1. Loading bracket tilted down



2. Loading bracket tilted up

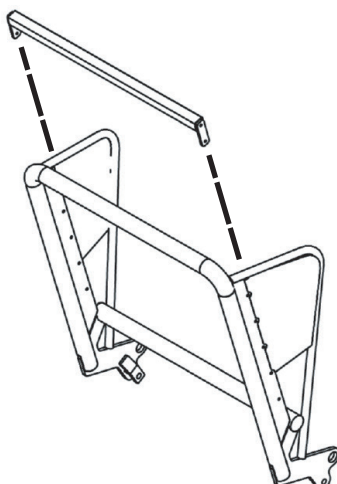
To unload the bales, switch over operation to tilt the top frame and open the pickup arm. When the top frame is tilted up, the pickup arm at the rear of the trailer opens and the round bales fall to the ground behind the bale trailer.



3. Unloading round bales with an open pickup arm and tilted top frame

Before reversing the bale trailer, the loading bracket must be tilted up and the top frame must be tilted down with the pickup arm closed.

4. When baling small bales:



For loading small bales, a pipe is installed on the loading bracket that allows you to lift small bales onto the bale trailer. The pipe can be mounted in different positions on the loading bracket.

Operating functions:

Maintenance:

Lubricate all grease nipples with grease (approximately every week the bale trailer is operating)

- 2 x 2 grease nipples on shafts for loading bracket cylinders
- 2 x 2 - - pickup arm
- 2 x 2 - - cylinders for pickup arm
- 2 x - - shafts for tilt cylinder
- 2 - - shafts for tilting
- 2 - - shafts for loading bracket

Check the lights.

Remember to tighten the wheel bolts regularly.
Remember to check the tyre pressure regularly (70 psi).

5. Faults on the Round Bale Trailer

Lifting bracket and top frame tipping/pickup arm opening cannot be activated:

- Insufficient oil pressure
- Electrical fault

No switching between lifting bracket and top frame tipping/pickup arm opening:

- 6/2-way valve coil fault
- No power to 6/2-way valve
- Electrical fault

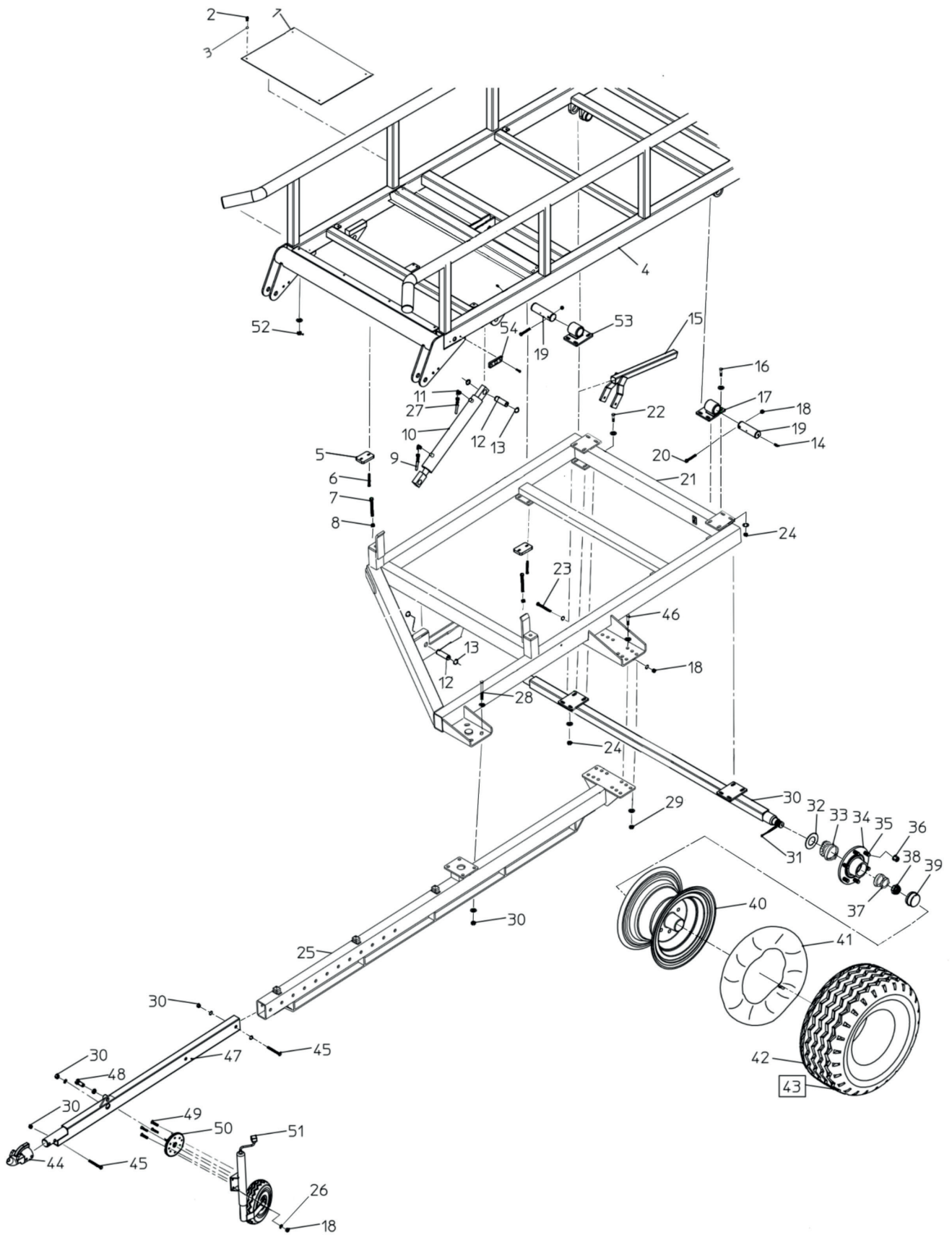
6. Technical data

The trailer is intended for bales with the following dimensions:

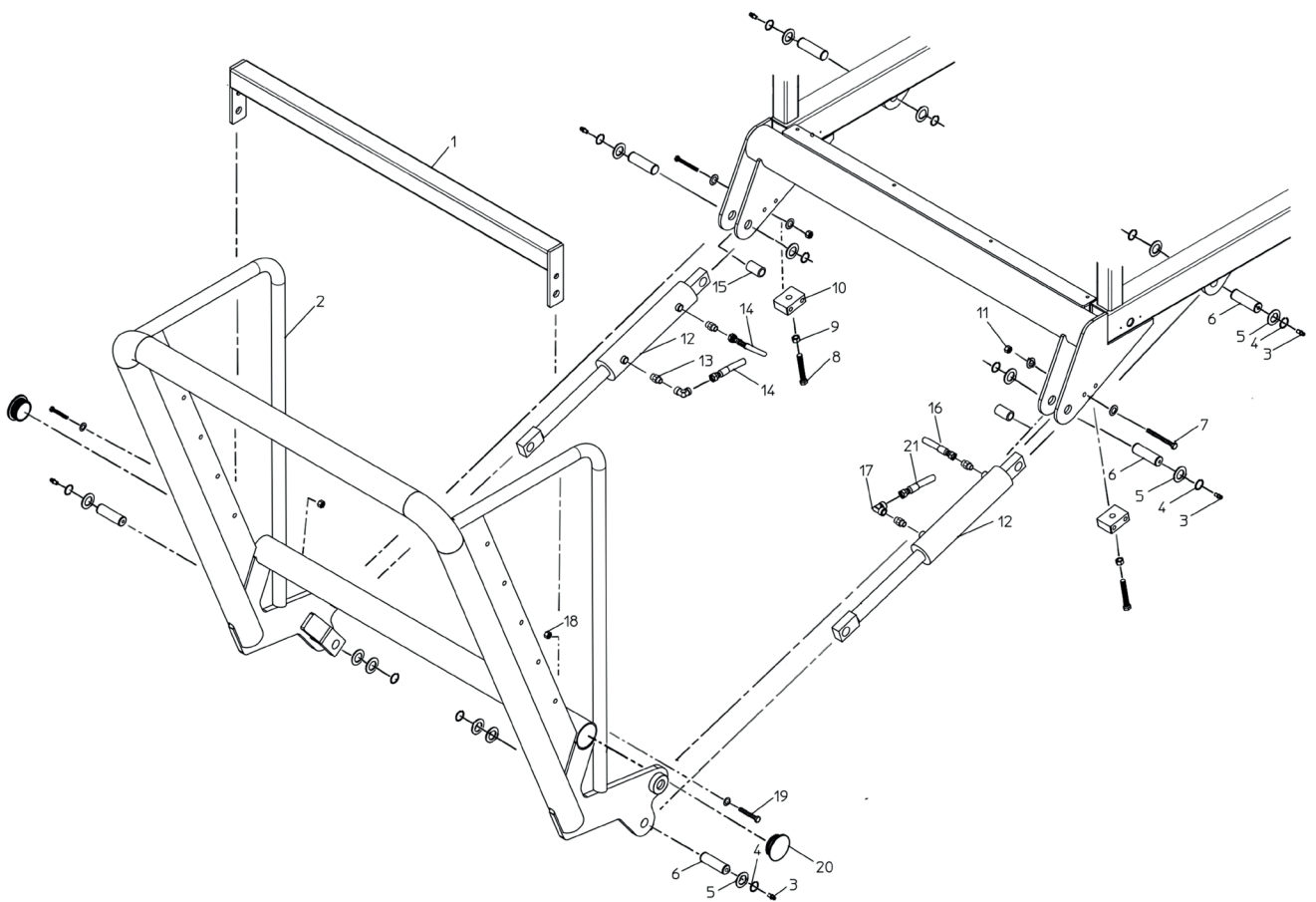
Width	120 cm
Diameter	Ø150 cm
Max. weight per bale	800 kg
Width - bed	240 cm
Length - bed	635 cm
Track width (Standard)	2050 mm
Length with drawbar	780 cm
Height at drawbar	230 cm
Tyre pressure	70 psi
Max. load	2400 kg

Noise:

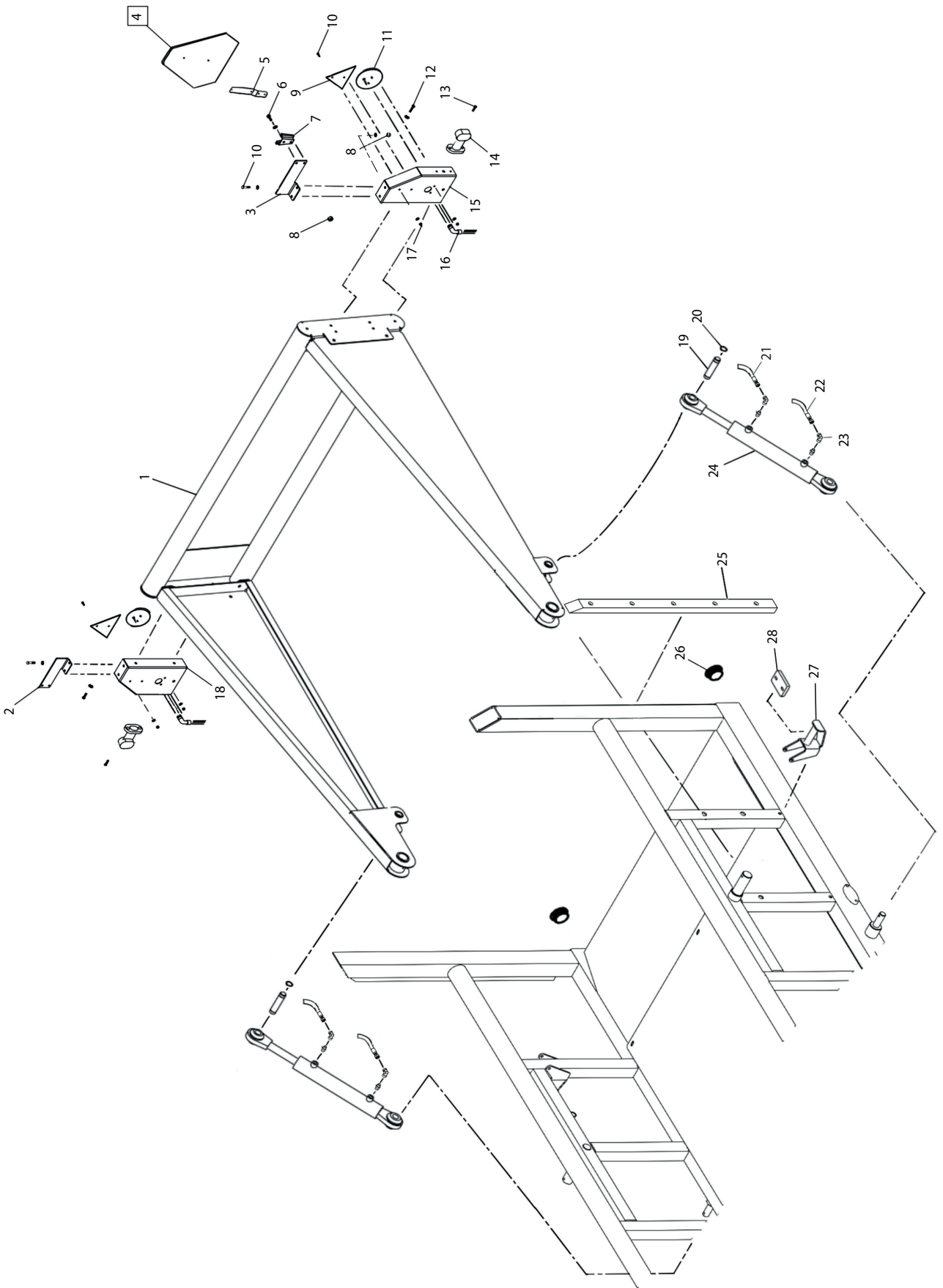
The sound level of the RB3 Round Bale Trailer is below 70 dB(A).



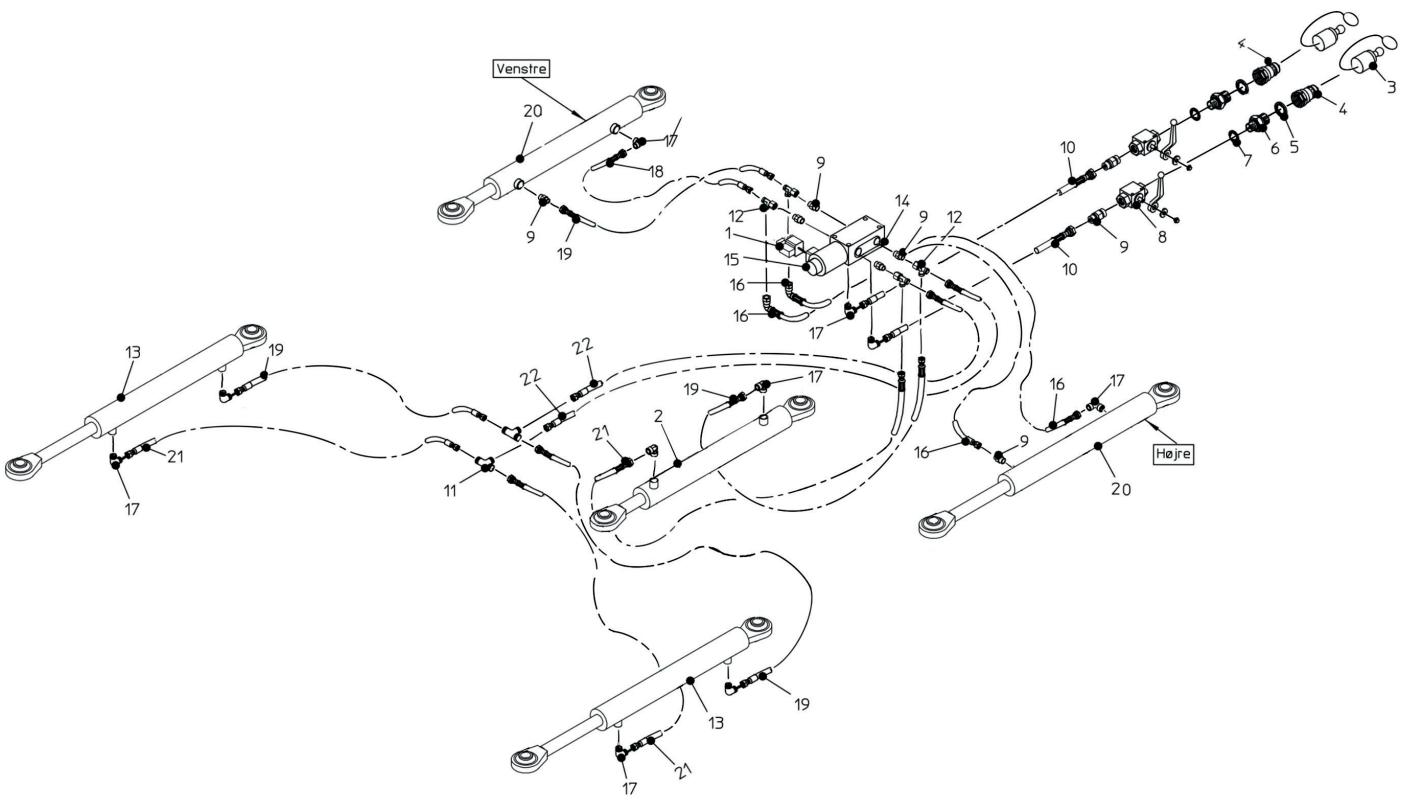
Item No.	Part No.	Qty	Description	Comments
1	2013510	4	Base plate	
2	763793	16	M8 x 30 Int. hex Round head	
3	050308	16	M8 Plain washer	
4	2013433	1	Top frame	
5	875006	2	Pom plate	
6	031808030	4	M8 x 30 Int. hex	
7	021020080	2	M20 x 80 Steel bolt	
8	044020	2	M20 Lock nut	
9	1008600	1	Hyd. hose 3/8 x 1050	
10	550002	1	Hyd. Cylinder	
11	1007544	2	Angle	
12	875066	2	Shaft	
13	700030	4	Retaining ring	
14	761286	2	Grease nipple	
15	875015	1	Safety bracket	
16	022212040	8	M12 x 40 Set bolt	
17	875014	1	Hole plate with rotary bushing	
18	044010	3	M10 Lock nut	
19	875068	2	Shaft	
20	021010090	2	M10 x 90 Steel bolt	
21	2013455	1	Subframe	
22	022212050	8	M12 x 50 Set bolt	
23	021010120	1	M10 x 120 Steel bolt	
24	044012	8	M12 Lock nut	
25	2003480	1	Drawbar	
26	050310	4	M10 Plain washer	
27	1008601	1	Hyd. Hose 3/8 x 1600mm	
28	022216050	4	M16 x 50 Set bolt	
29	044016	12	M16 Lock nut	
30	875750	1	Wheel shaft	
31	895500-1	2	Hub lock pin	
32	890150-12	2	Hub gasket	
33	890150-11	2	Bearing	
34	890150-10	2	Hub housing	
35	1009181-3	12	Hub bolt	
36	1009181-4	12	Hub nut	
37	890150-13	2	Bearing	
38	890150-14	2	Crown nut	
39	890150-15	2	Hub cap	
40	872905	2	Rim	
41	872915	2	Hose	
42	890800-1	2	Tyres	
43	890800	2	Wheel comp	
44	875900	1	Ball coupling	
45	021016100	1	M16 x 100 Steel bolt	
46	022216045	12	M16 x 45 Set bolt	
47	875150	1	Drawbar outer part	
48	895518	1	Locking pawl support wheel	
49	763727	4	M10 x 25 Int. hex Round head	
50	875021	1	Flange for support wheel rotation	
51	875940	1	Support wheel comp	
52	044008	16	M8 Lock nut	
53	875013	1	Hole plate with rotary bushing right	
54	895445	4	Side marker light	



Item No.	Part No.	Qty	Description	Comments
1	875052	1	Pipe for small bales for lifting bracket	
2	875050	1	Lifting bracket	
3	761286	6	Grease nipple	
4	700030	12	Ext. Retaining ring Ø30	
5	050230	8	Washer	
6	875066	6	Shaft	
7	021012100	4	M12 x 100 Steel bolt	
8	022220060	2	M20 x 60 Set bolt	
9	044020	2	M20 Lock nut	
10	875005	2	Adjustment plate	
11	044012	4	M12 Lock nut	
12	875810	2	Cylinder for loading arm	
13	1007724	4	Nipple	
14	1007521	2	Hyd. Hose 3/8 x 800 mm	
15	1008102		Bushing	
16	1008600		Hyd. Hose 3/8 x 1050 mm	
17	1007544		Angle	
18	044010		M10 Lock nut	
19	022210040		M10 x 40 Set bolt	
20	684090		Plug	
21	1008612		Hyd. Hose 3/8 x 600 mm	

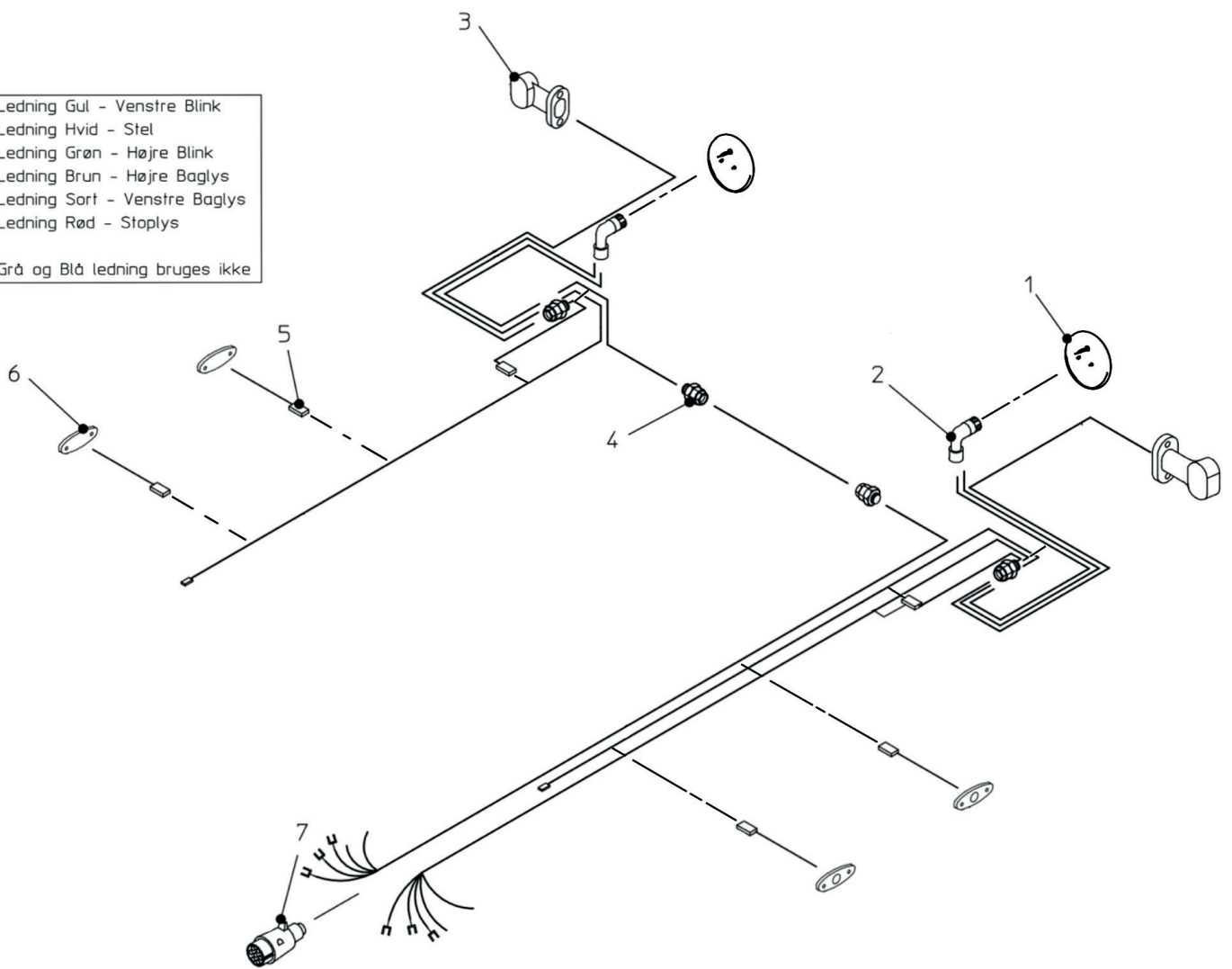


Item No.	Part No.	Qty	Description	Comments
1	2013443	1	Rear gate	
2	875822	1	Warning triangle plate right	
3	875823	1	Warning triangle plate left	
4	1008966	1	Warning triangle	
5	-	-		
6	022208020	2	M8 x 20 Set bolt	
7	1415100060	1	Warning triangle holder	
8	044008	8	M8 Lock nut	
9	872210	2	Red triangle reflector	
10	022205020	4	M5 x 20 Set bolt	
11	895441	2	Rear light	
12	022210030	4	M10 x 30 Set bolt	
13	022205030	4	M5 x 30 Set bolt	
14	2008288	2	LED marker light	
15	875821	1	Light bracket left	
16	875920	1	Cable set complete	
17	044005	4	M5 Lock nut	
18	875820	1	Light bracket right	
19	875065	2	Shaft	
20	700025	4	Retaining ring ext. Ø25	
21	1008601	2	Hyd. hose 3/8 x 1600 mm	
22	1008600	2	Hyd. hose 3/8 x 1050 mm	
23	1007544	4	Angle	
24	1008585	2	Cylinder	
25	2013710	2	Slide rail	
26	684050	2	Round end cap	
27	2013466	2	Adjustment stop for tilting arm	
28	875006	2	Pom plate for adjustment	

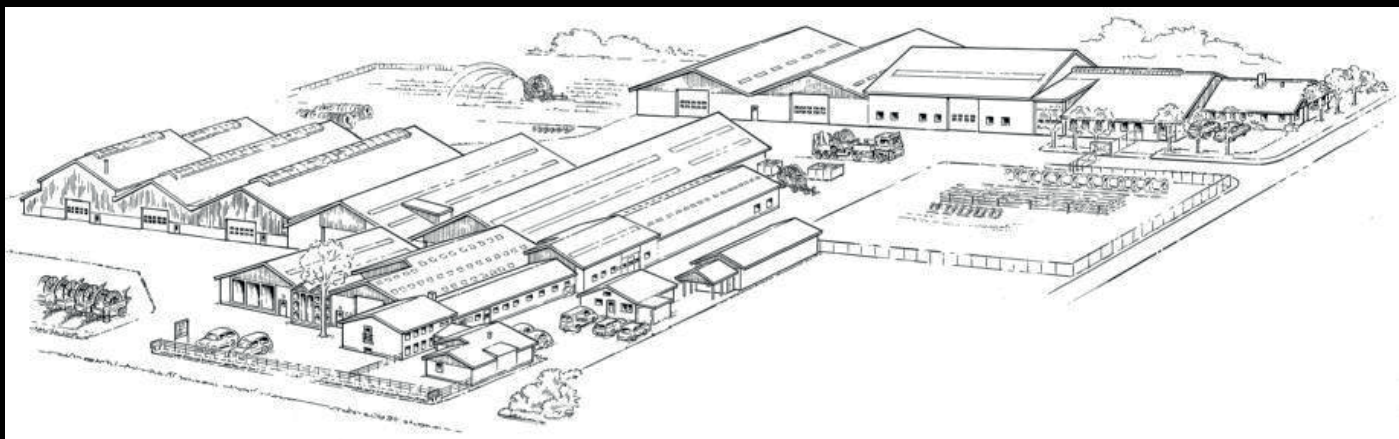


Item No.	Part No.	Qty	Description	Comments
1	875807	1	Connector for coil	
2	550002	1	Cylinder	
3	801711	2	Plastic plug	
4	801710	2	Male coupling	
5	050316	2	M16 Plain washer	
6	1007538	2	Collar nipple	
7	050312	2	M12 Plain washer	
8	1007510	2	Ball valve	
9	1007724	6	Nipple	
10	556013	2	Hyd. hose 3/8 x 9800 mm	
11	1007503	2	Tee	
12	1007531	2	Tee	
13	1008585	2	Cylinder	
14	875800	1	Valve	
15	875805	1	Coil	
16	1007521	2	Hyd. hose 3/8 x 800 mm	
17	1007544	6	Angle	
18	1008612	1	Hyd. hose 3/8 x 600 mm	
19	1008600	4	Hyd. hose 3/8 x 1050 mm	
20	875810	2	Cylinder	
21	1008601	3	Hyd. hose 3/8 x 1600 mm	
22	556006	2	Hyd. hose 3/8 x 3500 mm	

- Ledning Gul - Venstre Blink
- Ledning Hvid - Stel
- Ledning Grøn - Højre Blink
- Ledning Brun - Højre Baglys
- Ledning Sort - Venstre Baglys
- Ledning Rød - Stoplys
- Grå og Blå ledning bruges ikke



Item No.	Part No.	Qty	Description	Comments
1	895441	2	Rear light	
2	875920	2	Cable set complete	
3	2008288	2	Sling light	
4	895315	1	Cable coupling	
5	-	-	Collector	
6	895440	4	Side marker light	
7	1008965	1	7-pin plug	



FASTERHOLT

**A/S FASTERHOLT MASKINFABRIK
EJSTRUPVEJ 22, DK-7330 BRANDE
DENMARK**

TEL.: +45 97 18 80 66 FAX: +45 97 18 80 40

EMAIL: MAIL@FASTERHOLT.DK

WWW.FASTERHOLT.DK